

## SEPT. - MEETING AGENDA

### DATE:

TUESDAY, SEPTEMBER 12, 2023

### WHERE:

Plumbing Industry Training Center  
in Troy, MI

### 5:00 PM - 5:50 PM

CPD Review Manual /  
Incoming Water service

### 5:50 PM - 6:15 PM

Vendor Table Top Presentations

### 6:15 PM

Dinner Service

### 6:30 PM - 7:30 PM

Filter First Legislation

## REGISTRATION REQUIRED

IN-PERSON: <https://www.eventbrite.com/e/aspe-emc-september-2023-technical-program-tickets-694206188397>

SEE INSIDE COVER FOR TABLE OF CONTENTS

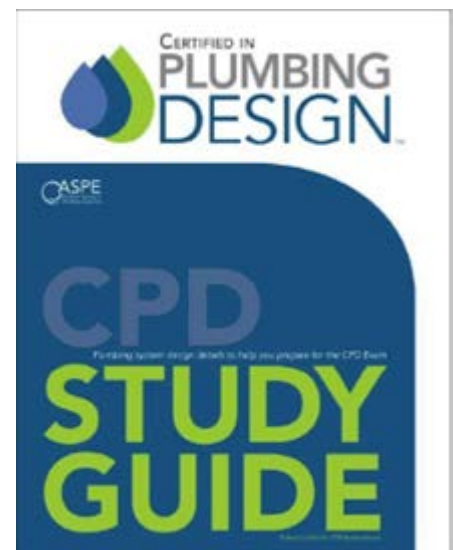
## William Grayzar, CPD, GPD, FASPE President of ASPE EMC



I hope you all had a wonderful summer and enjoyed some much-needed time off. Perhaps you took a vacation, attended a special event, spent time with family and friends, and/or just simply enjoyed a backyard barbecue. I would like to thank the EMC Chapter Board who took time out of their summer to prepare a great year of programs for its members.

By now you should have received the 2023-2024 Program for EMC -ASPE. If not, it can be found on the chapter website at <https://www.aspe.org/eastern-michigan/>. Our first chapter meeting will be September 12, 2023 at 5:00 PM at the Plumbing Industry Training Center (PITC). Our Design Class for September will begin with an overview of this year's design classes and more about the CPD Manual and exam. This will be followed by dinner and tabletop discussions with vendors our Technical Session covering the Filter First legislation being implemented in schools and childcare centers.

If you ever thought about becoming CPD registered, you won't want to miss out on this! For starters if you are member of the EMC of ASPE and do not currently hold a PE or CPD certification and are interested in obtaining the CPD certification, if you attend all of the early design classes between October and May this year, the chapter will cover the cost to provide you with an electronic copy of the current CPD Study Guide as a EMC-ASPE member benefit, a \$50.00 value.



Continued on page 2

# NOTICES

## Contents

President's Report .....	1
Program .....	3
In The Know .....	4
VP Technical Report .....	5
VP Membership Report .....	6
Birthdays .....	7
Mentorship .....	8
WOA .....	9
Line Card Sponsors .....	19 - 20

### SEPTEMBER BOARD MEETING

Tuesday, 9/5/23 @ 4:30 PM  
Online Meeting

### SEPTEMBER PROGRAM

Tuesday, 9/12/23, 5:00 - 7:30 PM  
Plumbing Industry Training Center,  
1911 Ring Drive, Troy, MI 48083

## President's Report (cont. from page 1)

Bill Grayzar, CPD, GPD

This year the 2023 ASPE National Symposium is being held in Seattle, WA from September 28 to October 1, 2023. More information including a schedule of events can be found on the National Society website at <https://www.aspe.org/conventions-symposiums/>

As always if you have any questions or comments, please do not hesitate to contact any member of the EMC-ASPE chapter board, including myself.

I look forward to seeing you at the Plumbing Industry Training Center on September 12, 2023.

*Bill*



**SAVE THE DATES!**

**2023 TECH SYMPOSIUM**  
**Bellevue, WA**  
9/28/23 - 10/1/23

**2024 CONVENTION & EXPO**  
**Columbus, OH**  
10/18/24-10/23/24

---

## **SEPTEMBER DESIGN SESSION**

**5:00-5:50 PM**

**TOPIC: CPD Review Manual /  
Incoming Water service**

Presenter: **PAMELA D. HARTSELL, CPD, PMP**

*Project Manager and Certified Plumbing Designer with  
Strategic Energy Solutions, ASPE EMC VP Technical*



*Pam Hartsell*

Pam is a Project Manager and Certified Plumbing Designer with Strategic Energy Solutions. She has over 30 years' experience in engineering for construction and is both a past president of the ASPE Eastern Michigan Chapter and well as it's current Vice President Technical. Pam's passion for safe, sustainable design and environmental stewardship is what led her to ASPE and what has kept her serving on

the Chapter Board in various roles for over 12 years.

In this presentation we will review incoming water service design considerations. We'll discuss water source, quality, pressure, known regional issues, backflow & cross connection prevention, and the 2018 Michigan Plumbing Code requirements. We will learn how to properly size the incoming service, calculate pressure drop to determine when a booster pump is needed, and review options for water treatment.

---

## **SEPTEMBER TECHNICAL SESSION**

**6:30-7:30 PM**

**TOPIC: Filter First Legislation**

Presenter: **ZACH DUFALA**

*Business Development Manager for Zurn Elkay Water Solutions*



*Zach Dufala*

Zach is a Business Development Manager for Zurn Elkay Water Solutions. He has been with Zurn Elkay for 3 years and has over 10 years of combined professional sales experience. For the past 9 months Zach has focused primarily on the K12 vertical with emphasis on State drinking water legislations, filtration, water cooler stations, sustainability, and hygienic restroom solutions. Zach received his bachelor's degree in

management from Penn State University. He is a driven passionate professional who enjoys opportunities to present solutions, educate others, problem-solve, while continuously learning.

This presentation will review MI SB 88, 89 – “The Filter First bills” as passed by the senate this bill will require all schools and childcare facilities to implement a drinking water management plan, install or supply filtered bottle-filling stations or filtered faucets, and have filtered water regularly tested to ensure the filters are operating properly. Will take a dive into the dangers of lead and the harmful effects of consuming lead in drinking water. Current look at filtered water advocacy sweeping across the nation and innovative solutions to ensure drinking water delivery meets future compliance.

---

### **New This Year:**

Design classes will be centered around the CPD Exam- attend all 7 classes and receive a CPD Study Guide.

### **About Registration and CEUs:**

You will need to register using an Eventbrite link that will be in the email. This allows us to know how many people we can expect. We require sign in/sign out sheets and your CEUs will be submitted to national within 1 week of our event. It may take up to another 2 weeks for the CEUs to show in your ASPE Education log. The PITC does have guest protocols we will have to obey in order to meet there, so please follow all posted signage and procedures.

## IN THE KNOW

### NEW INFORMATION FROM THE NATIONAL ASPE ASSOCIATION

#### **REGISTRATION IS OPEN FOR THE 2023 ASPE TECH SYMPOSIUM IN BELLEVUE**

This year's premier professional development event for plumbing engineers and designers, the 2023 ASPE Tech Symposium, is being held September 28 – October 1 at the Hyatt Bellevue in Bellevue, Washington, and early bird registration is now available .... [FULL ARTICLE](#)

#### **ASPE ANNOUNCES 2022–2024 COMMITTEE CHAIR APPOINTMENTS**

ASPE's Board of Directors is pleased to announce the official appointment of Committee Chairs for ASPE's Standing and Special Committees and Working Groups. This select group of individuals will persist with drive and enthusiasm to carry out the .... [FULL ARTICLE](#)

**FOR MORE NEWS HEAD TO THE ASPE NATIONAL SITE - [CLICK HERE](#)**

(Sourced from the ASPE National site)



# ASPE Pipeline

News for the Plumbing System Design Industry



The only news site dedicated exclusively to ASPE, our members, and the plumbing engineering industry



# VP Technical Report

Pam Hartsell, CPD, PMP



Welcome Back Eastern Michigan!

The summer was short but sweet. Personally, I took an amazing trip with my family to Sri Lanka, a tiny island off the southern coast of India. It's where my father is from, and it was really special to be able to tour the country with him and listen to his stories about growing up on a tropical island. I've

definitely caught the travel bug now, and I hope to see a little more of the world every year.

Our first meeting of the 2023-2024 program year is almost here, so please join us on September 12th for an overview of incoming water service design and a presentation on Filter First Legislation.

As I mentioned in the Summer Newsletter, this year we'll be presenting a series of design classes centered around the CPD Exam. Each month we'll focus on a different chapter and include a high-level overview of the design concepts and considerations for each topic.

We'll start the year with a discussion about the exam itself and the contents of the Guide. As an incentive to attend, we'll once again be offering a free book – this time it will be a copy of the CPD Study Guide - to those who attend all the classes. If you're considering taking the exam, it's an opportunity you won't want to miss!

Our Technical Programs, for the most part, will complement the Design Classes and include a couple of panel discussions, our annual joint meeting with ASHRAE Detroit, and another trip to the shop area for more live demonstrations.

The full 2023-2024 program will be published soon, so watch for that email and check out our website for more information about our chapter: [ASPE EMC - WELCOME](#)

As always, please reach out to me if you have any questions.

Your Chapter VP Tech,  
Pam Hartsell  
[vpt.aspe.emc@gmail.com](mailto:vpt.aspe.emc@gmail.com)

# ALL-IN-ONE SCALD PROTECTION



420-T Series

Now there's no need to install a thermostatic mixing valve below the sink. The new 420-T Series combines Chicago Faucets durability with integrated scald protection. The result is a solid, easy-to-install restroom faucet that complies with ASSE 1070 requirements. With the 420-T, everything you need to meet current building codes and protect users against scalding is built right into the faucet.

Visit [chicagofaucets.com](http://chicagofaucets.com) or call your local representative for more information.

Taggart-Knight Group  
248/553-4388  
[info@taggartknight.com](mailto:info@taggartknight.com)



# VP Membership Report

Josh Pedraja



We want to welcome in a new member to our Chapter and ASPE Family; David Scott of Zurn Elkay Water Solutions!!

I want to help welcome our members back for another season of excellent education from our ASPE chapter!! I hope everyone enjoyed their summer (always goes by too quickly) and ready

for our chapter meetings!! Although our schedules and road construction can often be difficult, we'd love to see you at our next chapter meeting! With this year's lineup, every member and non-member should see about attending. If you attend our monthly chapter meetings and are not a member, please come talk to me about becoming an ASPE member!

**Golf update 2024:** The committee has chosen a tentative date for next summer and once it's finalized we will publish the date for everyone. It will be held again at The Links of Novi in Novi. Stay tuned for more information!

Connect with and Follow us on LinkedIn (ASPE Eastern Michigan Chapter). We have up to date announcements and different posts that are educational, entertaining and informative on current events happening in our Plumbing World!

**Membership renewal!** If you are up to renew your membership, remember to do it today! We don't want to see you go!! There is a new option to be apart of multiple chapters! If you are interested, please keep The Eastern Michigan Chapter as your home chapter and sign up for as many others as you wish for only \$80 per chapter. You can also take advantage of Multiple-Year Membership Renewal. Save on your ASPE membership dues if you join or renew for more than one year! • 5% Discount for a two-year renewal. • 10% Discount for a three-year renewal.



**Commercial Washrooms. Brought to Life.**  
HANDWASHING & DRYING | ACCESSORIES | PARTITIONS | LOCKERS

### CUTTING-EDGE HANDWASHING TAKES SHAPE

The next generation WashBar raises your restroom to new heights by providing touch-free soap, water and drying in an edgy new design for an unforgettable handwashing experience. The single connection point to the sink provides an impressive design element and creates more open space for cleaning.

#### ADVANTAGES OF THE WASHBAR

- Floating design for a simple and clean aesthetic
- Single connection point to the sink for easier cleaning
- Eliminates the cost and mess of paper towels
- Icons and LED lights to visually orient users
- Smart sensor technology eliminates false activations
- WashBar and bowl work together to keep water in the basin
- Gallon soap capacity to reduce the number of replacements
- Captures soap and water activations for maintenance planning

The new WashBar WB2 is available with the Verge® LVQ basin in Evero® natural quartz, OmniDeck™ 5010 in Terreon® solid surface, or pair with a Terreon solid surface or Evero natural quartz undermount basin with the deck or countertop of your choice.





AVAILABLE IN SIX BEAUTIFUL FINISHES








### ALL-IN-ONE WASHBAR



All the fundamentals of handwashing have been thoughtfully designed into Bradley's innovative WashBar.

#### WASHBAR FEATURES



**CLEAN**

- Touch-free activation
- Low level LED indicator
- Gallon (3.8 L) soap capacity
- Simply replace soap tank – no cleaning or refilling
- Liquid and foam soap



**RINSE**

- Touch-free activation
- 0.5 GPM (1.9 LPM)
- Ultra-high efficient 0.35 GPM (1.4 LPM) option where water conservation is a necessity



**DRY**

- Touch-free activation
- Heated air stream dries hands quickly and efficiently
- Adjustable speed for quieter hand drying

[bradleycorp.com](http://bradleycorp.com)  
 800 BRADLEY • 1 262 251 5900  
 W142 N9101 Fountain Boulevard  
 Menomonee Falls, WI USA 53051

[bradleycorp.com/washbar](http://bradleycorp.com/washbar)

**Represented by New Century Sales:**

WEST MICHIGAN	WEST MICHIGAN	EAST MICHIGAN	EAST MICHIGAN
Michael Zago D (248) 960-1147 x 107 C (616) 293-2121 E mikez@newcenturysales.com	Rod Cox D (248) 960-1147 x 116 C (616) 706-1481 E rodc@newcenturysales.com	Todd Hiler D (248) 960-1147 x 106 C (513) 633-2609 E toddh@newcenturysales.com	Ross Beck D (248) 960-1147 x 115 C (734) 673-2119 E rossb@newcenturysales.com

[www.newcenturysales.com](http://www.newcenturysales.com)

A TOTAL, STATE-OF-THE-ART HOT WATER SYSTEM, ENGINEERED TO DELIVER A SUPERIOR LEVEL OF USER SAFETY, INFECTION CONTROL AND COMPLIANCE, FROM MECHANICAL ROOM TO THE POINT OF USE.



**ABH**

**GAS-FIRED WATER HEATING**

Leading-edge gas-fired institutional hot water generation, built for reliability, efficiency and durability.



**THE BRAIN®**

**THE BRAIN® DIGITAL RECIRCULATION VALVE**

Digital hot water temperature control that delivers unparalleled accuracy, stability and safety to mitigate the risk of Legionella and scalding.



**RADA DIGITAL FAUCET**

**RADA DIGITAL FAUCETS**

Hands-free, programmable, point-of-use fixtures from The Brain® digital technology built in, and offers thermal disinfection, dirty flush, bacterial-resistant design and ASSE 1070 compliance.



**ABH**

**SAGE® SMART HOT WATER SYSTEM MONITORING AND REPORTING**

Advanced software provides regular updates, documentation, custom-filtered reports, and real-time alerts for compliance with industry guidelines and Standards of Care.



**SAGE® MONITORING**



**PROGRAMMABLE OPERATION AND FLOW CONTROL**



**MERLO ENERGY**

Chip.Bidigare@merloenergy.com  
(586) 256 - 9822



**Armstrong**

# Member Birthdays

## SEPTEMBER BIRTHDAYS

- Houssein Madi . . . . 9-01
- Kelly Sugg . . . . . 9-02
- David Lord . . . . . 9-06
- Robert Frey . . . . . 9-08
- Zack Bondy . . . . . 9-11
- Adam Stier . . . . . 9-13
- Ron George . . . . . 9-14
- Dann Holmes . . . . 9-15
- Mike Kennedy . . . . 9-16
- Jeffery Weiss . . . . 9-16
- Douglas Drew . . . . 9-25
- Robert Van Goor . . . 9-27

\* Member birthday list provided by VP Membership, Josh Pedraja

**CELEBRATE EACH DAY LIKE IT'S YOUR BIRTHDAY!!**



# ASPE Mentoring Program

The Women of ASPE are excited to introduce ASPE's new Mentoring Program!

This program, which is available to all members of the Society, has been designed to connect ASPE members who have a particular skill set (mentor) with individuals (mentee) who are searching to acquire the same skills to develop and make progress toward their personal and professional goals.

## Who Is a Mentor?

A mentor is someone who can help the mentee develop skills for success and long-range career planning, is able to be a good listener, is willing to share experiences and views, is willing to commit time and effort, provides an "open door" to questions and problems, points out both strengths and opportunities for improvement, and has a vested interest in the growth and development of their mentee.

### Benefits to the mentor:

- Satisfaction in helping someone mature, progress, and achieve goals
- Meeting and sharing experiences with other mentors
- Personal ongoing support to help the mentee succeed
- Personal fulfillment through contribution to the Society and the individual

## Who Is a Mentee?

Having a mentor can contribute to a successful and satisfying career. Without a mentor, that learning occurs mostly through trial and error. With a mentor, even experienced professionals can benefit from the experiences and expertise of someone who has withstood the trial and can help the mentee avoid the mistakes. Similarly, those new to the industry will discover that being a mentee shortens the learning curve for acquiring the skills and knowledge most critical to a fruitful career.

### Benefits to the mentee:

- Discover new talents about yourself
- Career satisfaction
- Expand your personal network
- Maximize your strengths

**For more information click below:**

<https://connect.aspe.org/aspe-mentor-match/mentoring>







# Women of ASPE®

## Learn more about our group!

WOA is dedicated to **engaging, retaining,** and **advancing** women in the plumbing design industry through:

- > Mentoring programs
- > Membership outreach
- > Partnerships with industry-related associations
- > Educational and leadership offerings

And more!



Email [rrodriguez@aspe.org](mailto:rrodriguez@aspe.org) and visit [aspe.org](http://aspe.org)



# VE Sales merges with Sales Service Plus

**Cindy Zatto**

czatto@salesserviceplus.com

810-343-2713



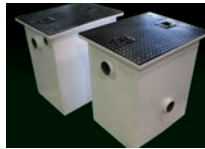
## Highland Tank®

- Aboveground & Underground Oil/Water Separators
- Oil Sand Interceptors
- Elevator Sump Pump Interceptors
- Manual Oil Interceptors
- Advanced Filtration Systems

Sales Service Plus has merged with VE Sales. We look forward to working with you!



Elevator Sump Pump Interceptors



Manual Oil Interceptors



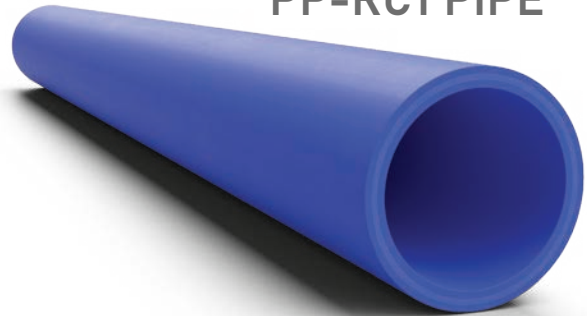
Oil/Water Separators



Elevator Oil Interceptors

www.highlandtank.com | 814-893-5701

## AQUATHERM BLUE PP-RCT PIPE



*A pipe system that lasts*

Imagine a pipe that never corrodes and will keep performing after over 50 years.

Get the specs at [www.aquatherm.com/learnmore](http://www.aquatherm.com/learnmore)



## We make rooftop supports easy.



Since 1982 | Easy to Work With  
20 year warranty | Made in USA  
Learn more at [miroind.com](http://miroind.com)



## QLS SERIES

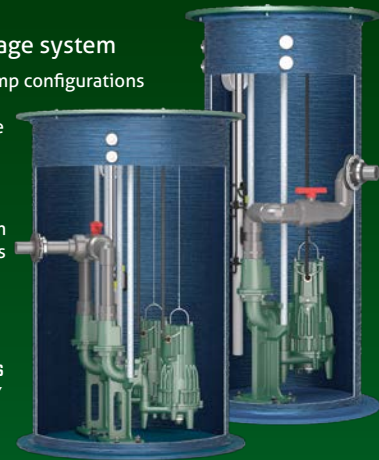
PREFABRICATED LIFT STATIONS WITH Z-RAIL® TECHNOLOGY

Choose your package system

- Single or multiple pump configurations
- Effluent, sewage, grinder, or progressive cavity pumps

Zoeller's Z-Rail® System and guide rails provides quick and easy pump removal

All Zoeller products are 100% FACTORY TESTED.





# The New Standard in Tank Lining Protection



**Only Bradford White comes standard with Vitraglas® tank lining featuring Microban®.**

- **Vitraglas®** provides unsurpassed protection from the corrosive effects of water.
- **Microban®** antimicrobial product protection helps prevent the growth of bacteria, mold and mildew on the surface of the tank lining.



Represented By:



Microban® antimicrobial product protection helps prevent the growth of bacteria, mold and mildew that may affect the product. The built-in antimicrobia properties do not protect users or others from disease-causing organisms. Microban® is a registered trademark of Microban Products Company. ©2023, Bradford White Corporation. All rights reserved. BWFACL0423

# Replacing Your Water Heater Every Few Years is Not Our Business Plan



Conquest<sup>®</sup> condensing, gas-fired water heaters are constructed from AquaPLEX<sup>®</sup> duplex stainless steel so they're corrosion-resistant in potable water at any temperature. Available in 199-1000 MBH, Conquest provides even more BTUs in small spaces and fits through a standard 36-inch doorway. With a thermal efficiency of up to 96%, long product life and a 15-year tank and heat exchanger warranty, you can't afford not to have one.

Call R.L. Deppmann or visit our Monday Morning Minutes blog at [deppmann.com](http://deppmann.com) for information on PVI Water Heaters  
800.589.6120



800.784.8326 | [pvi.com](http://pvi.com)



**TOPGOLF AUBURN HILLS: QuantumFlo Booster, Beeco RPZ, & Beeco Automatic Control Valve**



**GM Flint Assembly Plant: Hubbell Model EMV120-85-1.5SLA-A-XX Electric Tepid Water Heater**



**Velocity Boiler, Previously Crown Boiler**

**CRANE PUMPS & SYSTEMS**

**CRANE** PUMPS & SYSTEMS



**BOILERS & COMBINATION UNITS**

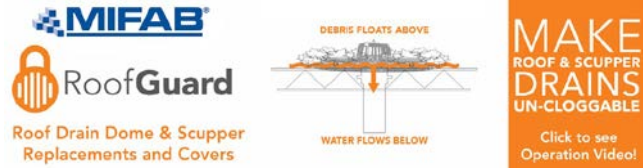
**RIELLO**

**Energy For Life**



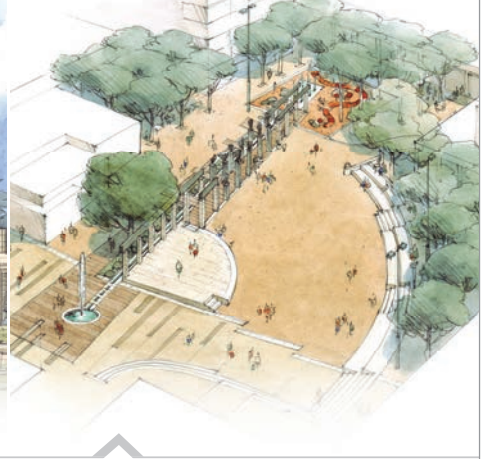
**QUALITY WATER & AIR: (248)589-8010**

**MIFAB PRODUCT LINE**





EDUCATION



PUBLIC VENUES

COMMERCIAL OFFICES

# T&S IS HERE >

T&S is proud to be a trusted name across a wide range of markets — staying at the forefront of today’s evolving industry and providing a vast selection of reliable solutions that meet required codes and compliances.

Learn more at [tsbrass.com/markets](http://tsbrass.com/markets).

Find us in



HEALTHCARE



T&S plumbing products represented in Eastern Michigan by: Diversified Spec Sales - 248-398-2400



**New Century Sales, Inc.**  
Manufacturer's Representatives



## COPPERPRESS® SYSTEM BENEFITS

- Size range from 1/2” to 4”
- Green visual application bands
- Consistent wall thickness on all products
- Leak before press systems
- Less equipment required
- Compatibility of fittings and tools

[www.copperpress.com](http://www.copperpress.com)

## Approvals & Certifications

- NFS ANSI/CAN 61
- UPC
- cUPC
- IPC
- IAPMO PS-117
- ICC-ES-PMG
- ASME B16.51



**ISOTUBI USA**

Stainless Steel Press Solutions

<https://isotubi-usa.com>

### Represented by New Century Sales:

**WEST MICHIGAN**

Michael Zago  
C (616) 293-2121

E [mikez@newcenturysales.com](mailto:mikez@newcenturysales.com)

**WEST MICHIGAN**

Rod Cox  
C (616) 706-1481

E [rodcd@newcenturysales.com](mailto:rodcd@newcenturysales.com)

**EAST MICHIGAN**

Todd Hiler  
C (513) 633-2609

E [todhd@newcenturysales.com](mailto:todhd@newcenturysales.com)

**EAST MICHIGAN**

Ross Beck  
C (734) 673-2119

E [rossb@newcenturysales.com](mailto:rossb@newcenturysales.com)

[www.newcenturysales.com](http://www.newcenturysales.com)



MegaPress® G  
Press safer.  
**Press  
bigger.**

viega

Connected in quality.



Quick, safe connections on large diameter gas lines.

Viega MegaPress(R)G requires no open flames or added cost of fire watch, so projects are safer and more profitable. Installers can secure gas pipe up to 4" in 16 seconds or less, saving 60-90% on labor costs. That's why professionals choose MegaPressG - the trusted press connection method approved for gas lines ½" to 4".

**Michael Norgan**  
District Sales Manager  
(989) 415-2431  
michael.norgan@viega.us

**INCREASE**  
**EXPAND**  
**GROW**  
**MULTIPLY**

Place your ad here and expand your company!



**New Century Sales, Inc.**  
Manufacturer's Representatives

**EAST MICHIGAN**  
1715 Traditional Dr.  
Commerce Township, MI 48390  
P (248) 960-1147 F (248) 960-1149

**WEST MICHIGAN**  
550 36th St. SE  
Grand Rapids, MI 49548  
P (616) 600-9660

 <b>AMTROL</b> Expansion Tanks <a href="http://www.amtrol.com">www.amtrol.com</a>	 <b>BASCO</b> Shower Doors <a href="http://www.bascoshowerdoor.com">www.bascoshowerdoor.com</a>	 <b>Bradley</b> Washroom Solutions <a href="http://www.bradleycorp.com">www.bradleycorp.com</a>	 <b>CALEFFI</b> Hydronic Solutions Hydronic Accessories <a href="http://www.caleffi.com/usa/en-us">www.caleffi.com/usa/en-us</a>	 <b>COPPER PRESS</b> <b>ISOTUBI USA</b> STAINLESS STEEL SOLUTIONS Plumbing Fittings <a href="http://www.copperpress.com">www.copperpress.com</a> <a href="http://www.isotubi-usa.com">www.isotubi-usa.com</a>
 <b>FAIRMONT designs</b> Furniture Integration Bath Furniture <a href="http://www.fairmontdesigns.com">www.fairmontdesigns.com</a>	 <b>FIAT PRODUCTS</b> Specialty Products & Plumbing Fixtures <a href="http://www.fiatproducts.com">www.fiatproducts.com</a>	 <b>General Wire Spring Company</b> Sewer Cleaning Machines <a href="http://www.drainbrain.com">www.drainbrain.com</a>	 <b>genova</b> PVC Products <a href="http://www.genovaproducts.com">www.genovaproducts.com</a>	 <b>IBC</b> Better Boilers <a href="http://www.ibcboiler.com">www.ibcboiler.com</a>
 <b>MATCO NORCA</b> Valves and Fittings <a href="http://www.matco-norca.com">www.matco-norca.com</a>	 <b>MYERS</b> Water and Waste Pumps <a href="http://www.femyers.com">www.femyers.com</a>	 <b>Oasis</b> Fiberglass & Acrylic Tub & Showers <a href="http://www.oasisbath.com">www.oasisbath.com</a>	 <b>OSIS</b> Oasis Water Coolers <a href="http://www.oasiscoolers.com">www.oasiscoolers.com</a>	
 <b>OATEY SCS</b> Supply Chain Services       <a href="http://www.oatey.com">www.oatey.com</a>	 <b>Panasonic USA</b> Bath Fans <a href="https://na.panasonic.com/us/home-living-solutions/ventilation-indoor-air-quality/">https://na.panasonic.com/us/home-living-solutions/ventilation-indoor-air-quality/</a>	 <b>PEX GUN</b> AUTOMATIC PEX PIPE TIE TOOL Pipe Installation Tools <a href="https://pexgun.com/">https://pexgun.com/</a>		
 <b>REHAU</b> Unlimited Polymer Solutions PEX Plumbing Products <a href="http://www.rehau.com/us-en">www.rehau.com/us-en</a>	 <b>Rheem RUUD</b> Water Heaters <a href="http://www.rheem.com">www.rheem.com</a> <a href="http://www.ruud.com">www.ruud.com</a>	 <b>STRASSER</b> woodenworks Bathroom Vanities & Cabinets <a href="http://www.strasserwood.com">www.strasserwood.com</a>	 <b>TURBOTORCH</b> BRAZING Brazing & Soldering <a href="https://www.esabna.com/us/en/products/gas-equipment/brazing-and-soldering/index.cfm">https://www.esabna.com/us/en/products/gas-equipment/brazing-and-soldering/index.cfm</a>	
 <b>StanleyBlack&amp;Decker</b>  <b>DEWALT</b> <a href="http://www.dewalt.com">www.dewalt.com</a>  <b>IRWIN TOOLS</b> <a href="http://www.irwin.com">www.irwin.com</a>  <b>LENOX</b> <a href="http://www.lenoxtools.com">www.lenoxtools.com</a>		 <b>LIXIL</b> Link to Good Living  <i>American Standard</i> <a href="http://www.americanstandard-us.com">www.americanstandard-us.com</a>  <b>DXV</b> <a href="http://www.dxv.com">www.dxv.com</a>  <b>GROHE</b> <a href="http://www.grohe.us/en_us">www.grohe.us/en_us</a>		

[www.newcenturysales.com](http://www.newcenturysales.com)





# KERR PUMP AND SUPPLY

12880 Cloverdale, Oak Park, MI 48237

248-826-9414 tpaichak@kerrpump.com www.kerrpump.com

Liquid Pumps  
Vacuum Pumps  
Heat Exchangers  
Blowers  
Related Equipment  
and Accessories

Sales • Service • Repair



## PENTAIR FIRE PUMPS AURORA®

### Compact Fire Pump Systems

- UL Listed/FM Approved NFPA-20
- UL Listed/FM Approved Controller NFPA-20
- Capacities of 50-750 Gpm.
- Pressures of 40-160 Psi.

### Vertical Split Case Electric Drive Fire Pump

- Electric Driven
- For Commercial, Industrial and Marine use only.
- UL Listed/ FM Approved/NFPA-20 Design

### Horizontal Split Case Diesel/Electric Drive Fire Pump

- Diesel and Electric driven available.
- Flows at 250 gpm to 5000 gpm.
- Pressures available up to 490 Psi.

Ask us about our Red-Hot Quick Shipping Program!

We test fire pumps  
for annual and  
acceptance  
requirements.



[www.aurorapump.com](http://www.aurorapump.com)

Michigan's Oldest Supplier of Pumps and Process Equipment - 1905



## Pattons medical

### Medical Air Systems\*

- Oil-Less Scroll
- Oil-Less Reciprocating
- Oil-Free Rotary Screw
- Oil-Flooded Reciprocating Control & Instrument Air Systems



### Medical Vacuum Systems\*

- Contactless Claw
- Lubricated Rotary Vane
- Dry Rotary Vane



### Medical Pipeline Products\*

- Manifolds
- Alarms
- Zone Valve Boxes
- Outlets
- Lab Pipeline Equipment
- Accessories



\* Meets or exceeds NFPA 99-2021 Edition Health Care Facilities Code

[www.pattonsmedical.com](http://www.pattonsmedical.com)

## PERFORMANCE engineering group



32995 Industrial Road, Livonia, MI 48150

Phone 734.266.5300 Fax 734.266.5310

[www.performanceengineering.com](http://www.performanceengineering.com)

### BRANDS WE REPRESENT



### BRANDS WE DISTRIBUTE



Centrotherm



Intellihot



SINCE 1906  
wessels  
company

Natural Gas / Propane / Electric  
85,000 to 10,000,000 BTU's  
- ALSO -  
Holby Thermostatic Mixing Valves



## ETV *Platinum Plus*

ELECTRONIC TEMPERING VALVE



Designed for Critical Temperature DHW Application

- Maintains Set Point within +/- 2°F

Safeguard Against High Temperature Conditions

- Optional High Temp Limit Valve
- Alarm Output

Maintenance Free

- Stainless Steel Valve Body reduces Scale Buildup
- External Actuator Eliminates Gasket Maintenance



## ETS AND ETS-LT

ELECTRONIC TEMPERING STATION

Pre-wired and Pre-Piped Assembly

- Contains ETV Platinum Plus
- Includes all Fittings, Isolation Valves

Wall Mounted and Floor Mounted

- Minimal Footprint
- Sizes from 3/4" to 4"



Conforms to the following:

ASSE 1017

California Lead Free Plumbing Law

CSA B 125.3 (NSF/ANSI 61 Section 8)



**Major Lozuaway and Associates**

Mike Ostrowski

1117 W. Grand Blanc Road

Grand Blanc, MI 48439

Phone: 810-287-6983

Email: [moski@lozuaway.com](mailto:moski@lozuaway.com)

**BALFREY & JOHNSTON, INC.**

Manufacturers' Representatives  
13050 Northend  
Oak Park, MI 48237  
Ph 313 864-2800 Fax 313 864-7219  
**George D. Johnston:** [george@balfrey-johnston.com](mailto:george@balfrey-johnston.com)  
[balfrey-johnston.com](http://balfrey-johnston.com)

**J.W. SALES, INC.**

Manufacturers' Representative  
1570 E. Highwood  
Pontiac, MI 48340  
O: 248.745.8590 F: 248.745.0889  
**Thomas Huck:** [thomash@jwsalesinc.net](mailto:thomash@jwsalesinc.net)  
C: 248-602-1575  
**Michael Fedorinchik:** [mikef@jwsalesinc.net](mailto:mikef@jwsalesinc.net)  
[JWsalesinc.net](http://JWsalesinc.net)

**BURKE AGENCY, INC.**

Manufacturers' Representatives  
2605 E. Oakley Park Road, Suite A,  
Commerce Twp, MI 48390  
Ph 248 669-2800 Fax 248 669-3310  
**Brian Burke, Peter Lapham, John Taylor**  
[bburke@burkeagency.com](mailto:bburke@burkeagency.com)  
[burkeagency.com](http://burkeagency.com)

**KERR PUMP AND SUPPLY**

Manufacturers' Representatives  
12880 Cloverdale  
Oak Park, MI 48237  
Ph 248 543-3880 Fax 248 543-3236  
Tyler Palchak: [tpalchak@kerrpump.com](mailto:tpalchak@kerrpump.com)  
Direct: 248-826-9414  
[kerrpump.com](http://kerrpump.com)

**DALE PRENTICE COMPANY**

Manufacturers' Representatives &  
Application Engineering Solutions Provider  
26511 Harding Avenue  
Oak Park, MI 48237  
Ph 800 536-4700 Fax 248 339-5559  
**Michael Cullen:** [mcullen@prenticeco.com](mailto:mcullen@prenticeco.com)  
Mobile 248 302-5924  
[prenticeco.com](http://prenticeco.com)

**LOCHINVAR**

High Efficiency Water Heaters and Boilers  
45900 Port Street  
Plymouth, MI 48170  
Ph 734 454-4480 Fax 734 454-1790  
**Jason Loverich:** [jloverich@lochinvar.com](mailto:jloverich@lochinvar.com)  
[lochinvar.com](http://lochinvar.com)

**DAVE WATSON ASSOCIATES, INC.**

Manufacturers' Representatives  
1325 W. Beecher St.  
Adrian, MI 49221  
Ph 517 263-8988 Fax 517 263-2328  
**Rick Johnston:** [rjohnston@davewatson.biz](mailto:rjohnston@davewatson.biz)  
[davewatson.biz](http://davewatson.biz)

**MAJOR/LOZUAWAY & ASSOCIATES, INC.**

Manufacturers' Representatives  
1117 W. Grand Blanc Rd.  
Grand Blanc, MI 48439  
Ph 810 234-1635 Fax 810 234-8389  
**Mike Ostrowski:** [moski@lozuaway.com](mailto:moski@lozuaway.com)  
Mobile 810 287-6983  
**Bill Campbell, PE:** [bill@lozuaway.com](mailto:bill@lozuaway.com)  
Mobile 810-287-0029

**DIVERSIFIED SPEC. SALES, INC./  
HOWLEY AGENCY SALES CO.**

Manufacturers' Representative  
13261 Northend Ave.  
Oak Park, MI 48237-3265  
**Brendan Burdette:** [bburdette@dsshowley.com](mailto:bburdette@dsshowley.com)  
Ph 248 398-2400 Fax 248 547-4905  
[diversifiedspec.com](http://diversifiedspec.com)

**NEW CENTURY SALES, INC.**

Manufacturers' Representatives  
1715 Traditional Dr.  
Commerce Township, MI 48390  
Ph 248 960-1147  
**Ross Beck:** [rossb@newcenturysales.com](mailto:rossb@newcenturysales.com)  
Mobile 734 673-2119  
**Todd Hiler:** [toddh@newcenturysales.com](mailto:toddh@newcenturysales.com)  
Mobile 513 633-2609  
[newcenturysales.com](http://newcenturysales.com)

**HS/BUY VAN ASSOCIATES, INC.**

Manufacturers' Representatives  
56 S. Squirrel  
Auburn Hills, MI 48326  
**Jarrett Armstrong**  
Ph 888 472-8982 Fax 248 852-0298  
[info@hsbuyvan.com](mailto:info@hsbuyvan.com)  
[hsbuyvan.com](http://hsbuyvan.com)

**PAULA. BAKER**

ASSE Region #4 Director - Mid West  
ASSE International  
18927 Hickory Creek Drive, Suite 220  
Mokena, IL 60448  
Ph 313 399-3072 Fax 248 585-1437  
**Paul Baker:** [paul.baker@ualocal98jatc.org](mailto:paul.baker@ualocal98jatc.org)  
[www.asse-plumbing.org](http://www.asse-plumbing.org)

---

**PERFORMANCE ENGINEERING GROUP**

Engineered Water Products  
32955 Industrial Rd.  
Livonia, MI 48150

**Alan Deal:** [adeal@performanceengineering.com](mailto:adeal@performanceengineering.com)  
Ph 734 266-5300 Fax 734 266-5310  
[performanceengineering.com](http://performanceengineering.com)

**R.L. DEPPMANN COMPANY**

Manufacturers' Representatives  
46575 Magellan Drive  
Novi, MI 48377

**Gerry Potapa Jr., CPD, Paul Prentice, LEED AP®**  
**Mark Fine, LEED AP®, Chris Lieder**  
Ph 800 589-6120 Fax 248 354-3763  
[sales@deppmann.com](mailto:sales@deppmann.com)  
[deppmann.com](http://deppmann.com)

**PROGRESSIVE PLUMBING SUPPLY**

Wholesale Distributor  
31239 Mound Road  
Warren, MI 48092

Ph 586 756-8662 Fax 586 756-9077  
[ppsupplyco.com](http://ppsupplyco.com)

Locations: Warren, Detroit, Mt. Clemens, and Oxford

**TAGGART-KNIGHT GROUP**

Manufacturers' Representatives  
37686 Enterprise Ct.  
Farmington Hills, MI 48331

**Gary O. Taggart**  
Ph 248 553-4388 Fax 248 553-4653  
[info@taggartco.com](mailto:info@taggartco.com)  
[taggartknight.com](http://taggartknight.com)

**QUALITY WATER & AIR, INC.**

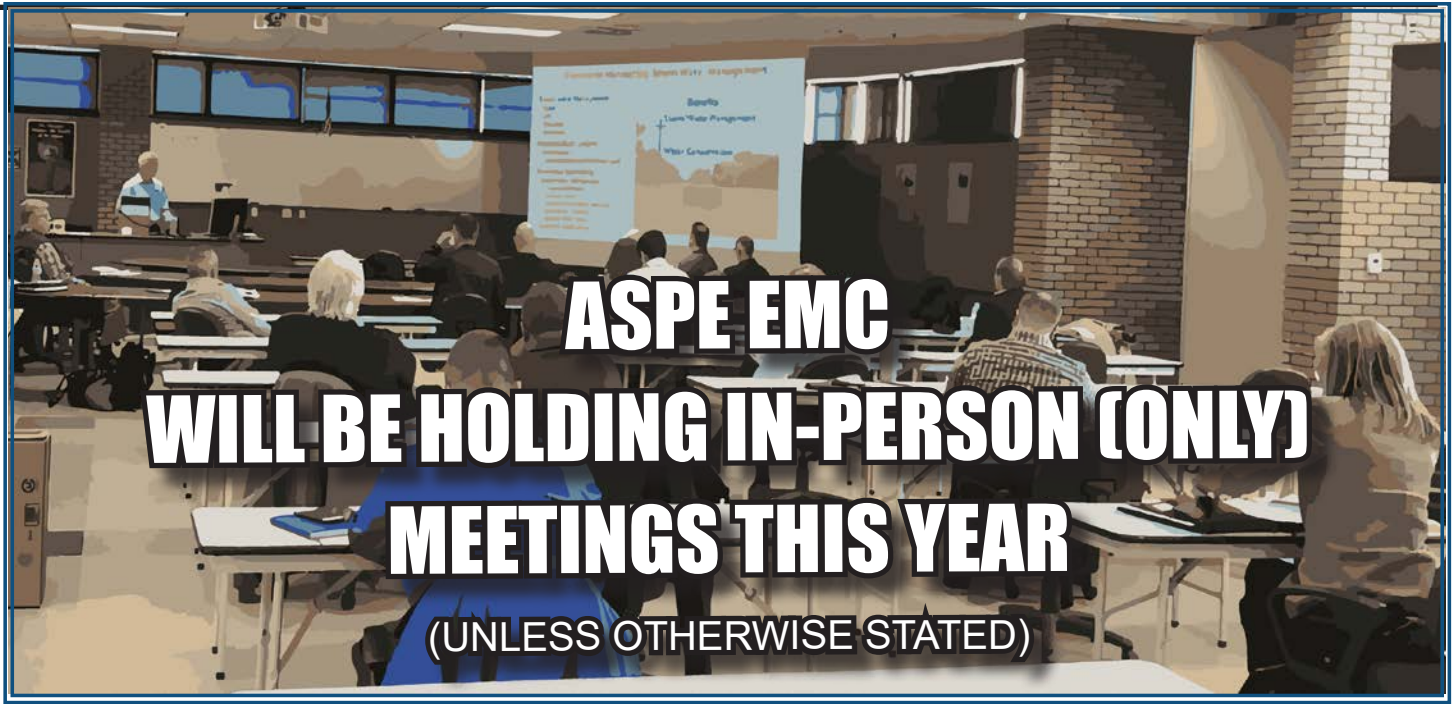
Manufacturers' Representative  
1402 Souter  
Troy, MI 48083

**Georgann Kummer, WBE**  
Ph 248 589-8010 Fax 248 589-8016  
[qualitywaterair@cs.com](mailto:qualitywaterair@cs.com)  
[qualitywaterair.com](http://qualitywaterair.com)

**SERVICE SALES PLUS**

"Service is our middle name"  
45606 Mast Street  
Plymouth, MI 48170  
Ph 734-454-7620 Fax 734-454-7632  
[servicesalesplus.com](http://servicesalesplus.com)





# ASPE EMC WILL BE HOLDING IN-PERSON (ONLY) MEETINGS THIS YEAR (UNLESS OTHERWISE STATED)

## 2023-2024 ASPE EMC Board

### President

William Grayzar, CPD  
28150 Greenfield Rd.  
Southfield, MI 48076  
(248)569-1430 ext.333  
bill@dsonline.com  
[president.aspe.emc@gmail.com](mailto:president.aspe.emc@gmail.com)

### VP Technical

Pam Hartsell, CPD, PMP  
Strategic Energy Solutions  
4000 W. Eleven Mile Rd.  
Berkley, MI 48072  
(248) 399-1900 x 222  
Fax: 399-1901  
[vpt.aspe.emc@gmail.com](mailto:vpt.aspe.emc@gmail.com)

### VP Legislative

Ryan Lyle  
Director of Training PITC  
1911 Ring Drive  
Troy, MI 48083-4229  
248-585-1435 ext. 122  
[Ryan.Lyle@ualocal98jatic.org](mailto:Ryan.Lyle@ualocal98jatic.org)

### VP Membership

Josh Pedraja  
Toledo, OH | Central USA  
4610 Entrance Drive, Suite H  
Charlotte, NC 28273  
616-307-5968  
[josh.pedraja@pattonsmmedical.com](mailto:josh.pedraja@pattonsmmedical.com)

### Education Chair

Kristin Simoneaux, P.E., CPD  
2338 Coolidge Hwy. #100  
Berkley, MI 48072  
(248) 336-4760  
[kristin.simoneaux@stantec.com](mailto:kristin.simoneaux@stantec.com)

### Treasurer

Rachel Gendich  
Strategic Energy Solutions  
4000 W. Eleven Mile Rd.  
Berkley, MI 48072  
(248) 399-1900  
Fax: 399-1901  
[treasurer.aspe.emc@gmail.com](mailto:treasurer.aspe.emc@gmail.com)

### Administrative Secretary

George Johnston II  
13050 Northend Ave  
Oak Park, MI 48237  
(313) 864-2800 Fax: 864-7219  
[george2@balfrey-johnston.com](mailto:george2@balfrey-johnston.com)

### Corresponding Secretary/ VP Social Media

Josh Pedraja  
Toledo, OH | Central USA  
4610 Entrance Drive, Suite H  
Charlotte, NC 28273  
616-307-5968  
[josh.pedraja@pattonsmmedical.com](mailto:josh.pedraja@pattonsmmedical.com)

### Chaper Affiliate/Liaison

Chip Bidigare  
23350 15 Mile Rd.  
Clinton Township, MI 48035  
586-755-3110 x 5938  
[chip.bidigare@merloenergy.com](mailto:chip.bidigare@merloenergy.com)

### AYP Liaison

Rachel Gendich  
Strategic Energy Solutions  
4000 W. Eleven Mile Rd.  
Berkley, MI 48072  
(248) 399-1900  
Fax: 399-1901

### WOA Liaison

Theresa Card, P.E., CPD,  
LEED AP BD+C  
Strategic Energy Solutions  
4000 West 11 Mile Rd  
Berkley, MI 48072  
(248) 399-1900 ext 223  
[allethe@gmail.com](mailto:allethe@gmail.com)

### Directors

Michael Melaragni, CPD  
38958 Lapham Drive | Livonia,  
MI 48154-1014  
(734) 591-9339  
[mjmelaragni@yahoo.com](mailto:mjmelaragni@yahoo.com)

Theresa Card, P.E., CPD,  
LEED AP BD+C  
Strategic Energy Solutions  
4000 West 11 Mile Rd  
Berkley, MI 48072  
(248) 399-1900 ext 223

Brianne Hall, P.E., CPD,  
LEED AP BD+C, GGP  
FTC&H  
39500 Mac Kenzie Dr. Suite 100  
Novi, MI 48377  
(248) 324-4780  
[bhall@fishbeck.com](mailto:bhall@fishbeck.com)

Dann Holmes  
(248) 921-0582  
[buildingwaterhealth@outlook.com](mailto:buildingwaterhealth@outlook.com)



## SPONSOR ADVERTISING OPPORTUNITY INFORMATION

ASPE EMC News is published 9 times per year - September through May.

Yearly advertising for a Business Card ad, which also includes a full Line Card in our sponsors guide:  
\$200.00 for members and \$250.00 for non-members.

Graphic Ads - Full Year (9 Issues): Quarter page - \$250.00 ○ Half page - \$350.00 ○ Full page - \$550.00

Checks should be made payable to ASPE EMC and mailed to: Rachel Gendich – Treasurer  
c/o Strategic Energy Solution, 4000 W. Eleven Mile Rd., Berkley, MI 48072

Email all digital artwork to: Theresa Green, Newsletter Editor at: [theresa.m.green@outlook.com](mailto:theresa.m.green@outlook.com)

Circulation 260 - Distributed to: Engineers, Contractors, Inspectors, and other industry professionals in Michigan.

**PAY FAST, PAY EASY**  
Secure Payments Accepted By

