

FEB. - MEETING AGENDA

DATE:

TUESDAY, FEBRUARY 13, 2024

WHERE:

Plumbing Industry Training Center
in Troy, MI

5:00 PM - 5:50 PM

Med Gas Basics

5:50 PM - 6:15 PM

Vendor Table Top Presentations

6:15 PM

Dinner Service

6:30 PM - 7:30 PM

Med Gas Specifics

REGISTRATION REQUIRED

IN-PERSON: <https://www.eventbrite.com/e/aspe-emc-february-2024-technical-program-tickets-813978961987>

SEE INSIDE COVER FOR TABLE OF CONTENTS

William Grayzar, CPD, GPD, FASPE President of ASPE EMC



Members of EMC-ASPE, please join me in welcoming our newest chapter member Mr. Lawrence Love with Victaulic. Welcome Lawrence! Chapter members if you see Lawrence at any of our upcoming chapter meetings make sure to introduce yourself to Lawrence.

ASPE's Bi-Annual Convention and Expo 24 will be held October 18-23, 2024 in Columbus Ohio. If you are thinking about attending and you have never been to a convention, I encourage you to talk to any member who has attended a past event. The networking with colleagues and experts, professional development, and chance to see the latest innovations in plumbing design cannot be understated. Also, please let the board know as we try to keep the representatives of our chapter informed of other ongoing events and activities at the convention as well as attend them as a chapter when possible.

EMC-ASPE members, this month's chapter design class and technical session will be covering Medical Gas design and will be hosted by our own V.P. Membership, Mr. Josh Pedraja. If you do Medical Gas design this is a meeting you won't want to miss.

Our March chapter meeting celebrating "World Plumbing Day" (WPD) is fast approaching. Our annual NASPE Races following the March meeting will be here before you know it. Car kits are free to chapter members and will be made available at the upcoming February meeting. In addition to the NASPE races in March, our design class and technical session will be covering Fire Protection systems and design.

Also, please remember to complete the evaluation report provided at each monthly Design Class and Technical Session. These reports are essential in providing the insight needed for the EMC-ASPE Chapter Board to continually improve our programs and maintain our self deemed status as the "education chapter".

Here are some more interesting facts about water:

- It takes about 70 gallons of water to fill a bathtub.
- Canada has more water below ground than above.

Continued on page 2

NOTICES

Contents

President's Report	1
Program	3
In The Know	4
VP Technical Report	5
VP Membership Report	6
Birthdays	7
NASPE Races	10 - 11
Golf Outing Flyer	12
Mentorship Opportunities	13
WOA	14
January Attendance / Sponsors	18
January Photos	19 - 29
Code Study Book Order Form	36
Line Card Sponsors	37 - 38

FEBRUARY BOARD MEETING

Tuesday, 2/6/24 @ 4:30pm
Online Meeting

FEBRUARY PROGRAM

Tuesday, 2/13/24, 5pm - 7:30pm
Plumbing Industry Training Center,
1911 Ring Drive, Troy, MI 48083

NASPE RACES - IN CELEBRATION OF WORLD PLUMING DAY!

Tuesday, 3/12/24
Held following the March 2024 Meeting
Flyer on pgs. 10-11

ASPE EMC GOLF OUTING

Tuesday, 6/11/24
The Links of Novi
Flyer on pg. 12

President's Report (cont. from page 1)

Bill Grayzar, CPD, GPD

- 85% of the world's population lives on the driest half of the planet.
- It takes about 20 gallons of water to create one pint of beer.
- A swimming pool loses about 1,000 gallons of water a month to evaporation.

Just a second reminder the **2021 Part 7 MPC** (Michigan Plumbing Code), **2021 Part 9a MMC** (Michigan Mechanical Code) and the **2021 Part 8 MEC** (Michigan Electrical Code) will **go into effect on March 12, 2024**, according to the State of Michigan's Department of Licensing and Regulatory Affairs (LARA) website. The 2021 Part 4 MBC (Michigan Building Code) and the 2021 Michigan Rehabilitation Code filing and effective dates are still pending.

I look forward to seeing you at the Plumbing Industry Training Center on February 13, 2024

Bill



LATEST NEW MEMBER(S)
~ WELCOME ~

LAWRENCE LOVE

FEBRUARY DESIGN SESSION

5:00-5:50 PM

TOPIC: Med Gas Basics

Presenter: **JOSH PEDRAJA**, ASSE 6060

Patton's Medical / ASPE EMC VP Membership & ASPE Region 2 Affiliate Liaison



Josh Pedraja

Description: Medical Gas can be confusing, especially to those who do not do it on a daily basis. This Design Class will go over the basics in Medical Gas, specifically to the building design we are reviewing this year. We will cover the basics and what you need to know in order to complete the Medical Gas for this particular design.

Josh has 18 years' experience in the Medical Gas industry with various roles such as Service Coordinator, Inside Sales, Customer Support and Outside Sales. He also has a little background in industrial vacuum applications. His education background is utilized when working with engineering firms as a Medical Gas Consultant and with ASPE education. He currently represents Patton's Medical where he covers the Central US by working with engineering firms, contractors, medical facilities/lab facilities, distributors and service partners. Josh has helped create medical vacuum & air systems sizing standards for the same national health network he helps oversee and has worked with the Federal Emergency Management Agency (FEMA) on designing and building of mobile hospital trailers to treat COVID hotpots and natural disaster relief efforts. He is very active with ASPE as current Region 2 Affiliate Liaison, VP Membership with Eastern Michigan, Committee Chairman for the EMC Golf Outings and sits on the ASPE Membership Committee and the Planning Committee for the '24 Expo in Columbus, Ohio. He is active with additional memberships for the Chicago, Cleveland and Central Ohio Chapters.

New This Year:

Design classes will be centered around the CPD Exam- attend all 7 classes and receive a CPD Study Guide.

About Registration and CEUs:

You will need to register using an Eventbrite link that will be in the email. This allows us to know how many people we can expect. We require sign in/sign out sheets and your CEUs will be submitted to national within 1 week of our event. It may take up to another 2 weeks for the CEUs to show in your ASPE Education log. The PITC does have guest protocols we will have to obey in order to meet there, so please follow all posted signage and procedures.

FEBRUARY TECHNICAL SESSION

6:30-7:30 PM

TOPIC: Med Gas Specifics

Presenter: **JOSH PEDRAJA**, ASSE 6060

Patton's Medical / ASPE EMC VP Membership & ASPE Region 2 Affiliate Liaison

Description: This presentation will provide insight on the Medical Gas Design in the patient room and operating room in terms of layout and specifics on Medical Vacuum, Medical Air, Non-Medical Air/Instrument Air options and will cover the type of outlets used in each application. In addition, we will gloss over the secondary equipment that connects into the MedGas Outlets in the patient room.



IN THE KNOW

EMC 45TH ANNIVERSARY HISTORY BOOK IS STILL AVAILABLE!

Cost for printed book - \$50, check or credit card accepted

Pick up @ SES or during a chapter meeting

FREE digital download on the ASPE EMC website.

TABLE TOP SPONSORSHIP PRICING

ASPE Members

- \$200.00 for the 1st table per meeting/per vendor
- \$150.00 for each additional table per meeting/per vendor

Non-Members

- \$250.00 for the 1st table per meeting/per vendor
- \$200.00 for each additional table meeting/per vendor

If a vendor purchases table tops for 3 meetings during the year, a 4th meeting table top will be provided for free.



Improve the performance and safety of your hot water systems.

THE BRAIN® from Armstrong International

- Ready to go out of the box or field adjustable via Bluetooth® connectivity with the SAGE® mobile app
- +/-2°F DRV water temperature control at peak, moderate or zero fixture demand on hot water system designed for continuous recirculation
- Programmable set point range of 81-158°F (27-70°C) capable of BAS or SAGE® mobile app for monitoring and adjustment
- 1°F minimum recirculating water temperature differential



- Programmable thermal disinfection range of 158-185°F (70-85°C)
- Automatic safe closure of hot water inlet in response to: inlet supply failure, 110V power failure, or programmable high temperature error
- Automatic safe closure of hot water inlet powered by a replaceable lithium battery monitored for low-level alerting

Find out more



Contact us:
800-362-4994
sales@merloenergy.com

VP Technical Report

Pam Hartsell, CPD, PMP



Hello again, Eastern Michigan!

I hope you're all staying warm and looking forward to Spring!

To recap our January Meeting, we had a fantastic turn out for our annual ASHRAE/ASPE event, which was held at the International Conference and Banquet Center in Greektown. The crowd was lively and the venue was absolutely beautiful! Special thanks go out to DJ Connelly for sponsoring the meeting and making all of the arrangements!

Our Design Class was a deep dive into Natural Gas Design from ASPE EMC President, Bill Grayzar. Bill gives that presentation every few years and it just keeps getting better! Unfortunately, we were not able to record it, but if you'd like a copy of the slides, please reach out to Bill at: president.aspe.emc@gmail.com

Our Technical Presentation was a very interesting talk given by Dave Stenrose, Chief Boiler Inspector at the State of Michigan Boiler division, about upcoming changes to the MI Boiler Code. Most notably was that the use of room air for combustion will no longer be allowed. Combustion air will need to be directly ducted to the appliance from the outdoors.

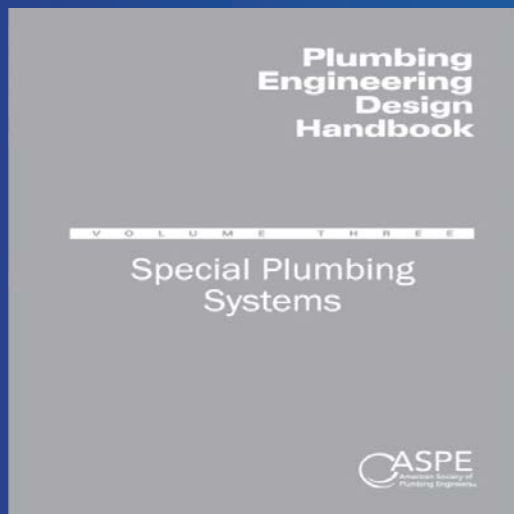
Mr. Stenrose also gave a nice overview of the duties of all of the inspectors and some statistics on the number of boilers installed in the state. It was very informative, and we are grateful that he was willing and able to join us and share this info.

February brings us a couple of great presentations on medical gas, given by our VP Membership, Josh Pedraja. If you follow our LinkedIn page, you know that Josh is very active in the ASPE Community and gives these presentations to other chapters on a regular basis. This won't be Josh's first time presenting to Eastern Michigan, and we're looking forward to the latest and greatest info he has to share with us. This will also be another installment in our series that counts towards attendance if you're interested in a free copy of CPD Study Guide.

We'll also be handing out Derby Car kits for the annual NASPE race next meeting in honor of World Plumbing Day. If you like cars, enjoy building models and love the excitement of a good race – grab a car kit and join in the fun! We'll have trophies and prizes for all the winners!

As always, please reach out to me if you have any questions.

Your Chapter VP Tech,
Pam Hartsell
vpt.aspe.emc@gmail.com



ASPE MEMBERS NOW HAVE ACCESS TO THE NEW UPDATED VERSION OF THE PLUMBING ENGINEERING DESIGN HANDBOOK - FOR FREE!

[Click here to find out more.](#)

VP Membership Report

Josh Pedraja, ASSE 6060



We want to welcome in a new member to our Chapter and ASPE Family; **Lawrence Love** of Victaulic!! Welcome to the ASPE Family!!

How about those Lions!! We haven't seen this exciting of a season since Barry Sanders was running all over the NFC Central up in Pontiac. These playoffs have been remarkable and have been missed for the past 30 years. Speaking of memories, do you know anyone who was a part of ASPE (not inferring a 30-year gap) that wants to return as a member? Contact anyone on the Board and we'll help them become a member again.

Golf update 2024: SAVE THE DATE! Tuesday, June 11th 2024 is our 2nd Annual Golf Outing. It will be held again at The Links of Novi in Novi. Stay tuned for more information!

Connect with and Follow us on LinkedIn (ASPE Eastern Michigan Chapter). We have up to date announcements and different posts that are educational, entertaining and informative on current events happening in our Plumbing World!

Membership renewal! If you are up to renew your membership, remember to do it today! We don't want to see you go!! There is a new option to be a part of multiple chapters!

If you are interested, please keep The Eastern Michigan Chapter as your home chapter and signup for as many others as you wish for only \$80 per chapter. You can also take advantage of Multiple-Year Membership Renewal. Save on your ASPE membership dues if you join or renew for more than one year! • 5% Discount for a two-year renewal. • 10% Discount for a three-year renewal.

Current Members: Let's not forget our mission to bring in fresh faces – we're all about embracing and empowering younger members. They bring new energy and ideas that keep us on our toes and moving forward. Together, we're building something fantastic here, and we're grateful for each one of you who's part of it. I feel this is a great time to challenge you to invite someone to join our chapter! As always, the Eastern Michigan Chapter of ASPE is looking for new members! Do YOU know of any?? Anyone that would benefit in Plumbing Technical Publications – Plumbing Convention and Technical Symposiums – Certifications in Plumbing Design – Plumbing Codes and Legislation – Continued Education Programs and networking with peers throughout the plumbing industry. Please send them my email address and we'll get them signed up with this great organization. vpm.aspe.emc@gmail.com



CPD Examination

2024 CPD Exam Dates: April 15–26

Deadline to register is April 1, 2024

To receive a registration link, please fill out the eligibility form

Click [HERE](#) to access the eligibility form.

Member Birthdays

JANUARY BIRTHDAYS

Paul Prentice 2-09
Peter Lapham 2-15
Terry Burger 2-17
Emily Schwarzkopf . . 2-19
Rob Teifer 2-24
George Williams 2-26

* Member birthday list provided by VP Membership, Josh Pedraja

CELEBRATE EACH DAY LIKE IT'S YOUR BIRTHDAY!!



Update your specifications! The NEW EZH20 is here!

Single Old#	New	Bilevel Old #	NEW
LZS8WSLP	LZS8WSSP	LZSTL8WSLP	LZSTL8WSSP

FEATURES:



FASTER FILTER CHANGES



VISUAL FILTER MONITOR



AUTOMATIC FILTER RECOGNITION



ENHANCED EZH20® BOTTLE FILLING STATION

with Quick Filter Change Wrapper

The bottle filling design features a drop-down cooler wrapper for quick, convenient filter changes. Standard on both single and bi-level units, the stainless steel wrapper provides quick access to the filter, water shut-off valve and power supply without removing the entire wrapper.

ELKAY

STANDARD Features:

- **Quick Filter Change Wrapper** allows for drop down access to filter, chiller and waste water and electrical connections in less than 30 seconds. All panels are stainless steel and tamper resistant.
- **6,000 Gallon** capacity NSF / ANSI 42 & 53 lead filter (51600C)
- **Same waste, water, electrical connection location and dimensions as previous models**
Available with **OPTIONAL** 2,250 Gallon capacity **PFOS & PFOA** reduction filter **SUFFIX (-PF)**

Upgrade legacy installed EZH20 units with side filter access lower wrappers and upgraded filtration:

EZFMK Filter Maintenance Kit Single

EZFMTLK

Filter Maintenance Kit (Bilevel)

51600C 6,000 Gallon Replacement Filter

71300C

2,250 Gallon PFOS / PFOA Filter

Schedule a lunch and learn with us to discuss the innovative new products from Elkay.

filterfirst@balfrey-johnston.com phone:313-864-2800



New Century Sales, Inc.
Manufacturer's Representatives

EAST MICHIGAN
1715 Traditional Dr.
Commerce Township, MI 48390
P (248) 960-1147 F (248) 960-1149

WEST MICHIGAN
550 36th St. SE
Grand Rapids, MI 49548
P (616) 600-9660

BETTER DESIGN. BETTER HEATER.
BEST SOLUTION

OUR BEST HYBRID YET.

Packed with the most durable, advanced features, the Rheem® Hybrid Water Heater makes installs and service easier. Plus, with 50- and 80-gallon models available, it's the best solution to drive sales for your business.

- 360° Performance™**
Estimated savings of over \$4000 in energy costs!
- 360° Installability™**
Horizontal transport for easy pick-up
- 360° Durability™**
Best-in-class warranty!

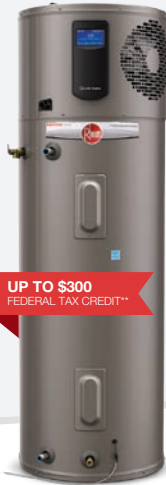
EcoNet™ Enabled! for alerts & control from home or on-the-go.

Rheem.com/HybridSolutions
or contact your local distributor below for details

*Based on comparison of a 50-gallon Rheem® Hybrid Water Heater compared to a 50-gallon standard residential electric water heater with a 0.95 EF. **Based on comparison of a 50-gallon Rheem® Prestige® Series Hybrid Heat Pump water heater and a leading competitor's 50-gallon Hybrid water heater. †Purchase and installation of EcoNet WiFi Kit required. WiFi Broadband internet connection required. **Consult with your tax advisor for more information.



The new degree of comfort.™



**UP TO \$300
FEDERAL TAX CREDIT****

Filtration Without Frustration

Save Time and Money On Maintenance. Access OASIS filtration systems at the top of the bottle fillers with Tilt 'N Tether! Change filters in minutes with easy access to the filter up top. Oasis' exclusive Tilt 'N Tether allows for faster, hands-free filter changes without crawling on the floor.

Learn more at oasiscoolers.com



OASIS
WE KNOW WATER.™

Changing Filters Has Never Been Easier



**GREAT LOOKING.
GREAT OPTIONS.
GREAT VALUE.**

BRADLEY LAVATORY SYSTEMS offer a variety of touch free and worry-free options for handwashing in public spaces. Design your ideal solution with multiple materials, basin shapes and faucet choices. Trust Bradley for your next project, the leader in commercial handwashing. Visit bradleycorp.com for more information. **Commercial Washrooms. Brought to Life.**

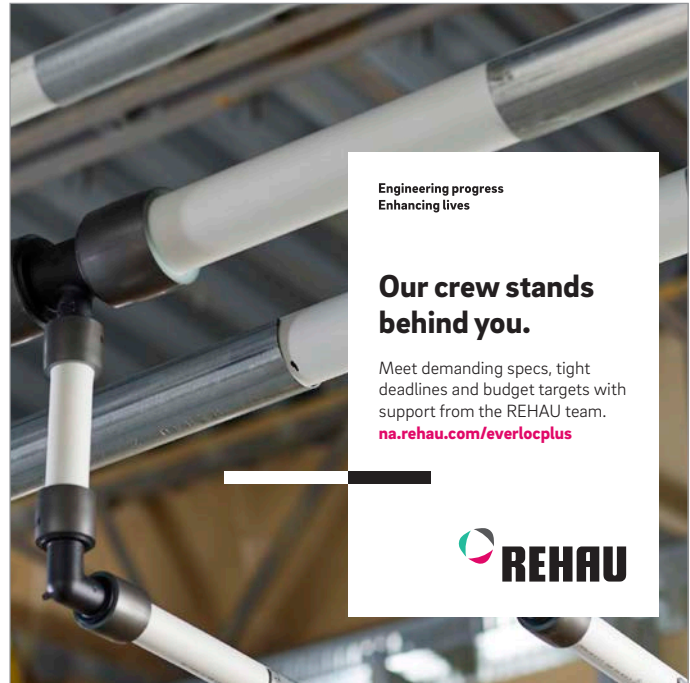


EVERO
CAST-FORMED NATURAL QUARTZ

Terreon
CAST-FORMED SOLID SURFACE



bradleycorp.com/lavatory-systems



Engineering progress
Enhancing lives

Our crew stands behind you.

Meet demanding specs, tight deadlines and budget targets with support from the REHAU team.
na.rehau.com/everlocplus



Represented by New Century Sales:

WEST MICHIGAN
Michael Zago
C (616) 293-2121
E mikez@newcenturysales.com

EAST MICHIGAN
Todd Hiler
C (513) 633-2609
E toddh@newcenturysales.com

EAST MICHIGAN
Ross Beck
C (734) 673-2119
E rossb@newcenturysales.com

www.newcenturysales.com



In celebration of
World Plumbing Day
the EMC-ASPE will be
hosting the following
event at the
March 12th, 2024 meeting:



NASPE racing is a timed race similar to a Pinewood Derby Race utilized in the Cub Scouting Program around the world.

The NASPE Race is themed to celebrate World Plumbing Day.

World Plumbing Day is an international event held every year on March 11 and was initiated by the World Plumbing Council to celebrate the important role plumbing plays in the health and safety of modern society.



EMC-ASPE is encouraging chapter members to design, build and race cars in celebration of World Plumbing Day. A raffle along with trophies, awards and prizes will be provided at the event. Based on the number of entries awarded may be provided for:

- Fastest race time (1st, 2nd and 3rd Place)
- Best representation for World Plumbing Day
- Best representation of a plumbing product.
- Best representation of a plumbing tool.
- Best green design

**Car Kits are Free to all EMC-ASPE Members
you can contact any of the chapter board
members!**

DINNER – RACING - PRIZES

EMC-ASPE Board members will serve as Official Judges for the event and William Grayzar chapter President will serve as the race moderator and official.

OFFICIAL RACE AND ASPE TECHNICAL MEETING:

WHEN: Tuesday, March 12th, 2024.

WHERE: Plumbing Industry Training Center located at 1911 Ring Drive in Troy, Michigan

AGENDA:

- | | |
|--|---|
| ➤ Design Class | 5:00 P.M. till 6:00 P.M. |
| ➤ Race Registration & Weigh-In: | 6:00 P.M. till 6:30 P.M |
| ➤ Dinner | 6:00 P.M. till 6:30 P.M. |
| ➤ Technical Session | 6:30 P.M. till 7:30 P.M. |
| ➤ NASPE Race | 7:30 PM till completion (approx. 8:00 P.M.) |



CODES AND STANDARDS for NASPE Racing are as follows:



OFFICIAL RACE CAR DESIGN BUILD KIT:

1. Official Race Car Kits must be the same as those used for the Cub Scouting program pinewood derby races. Car kits will be available at the ASPE Technical meetings, or the can be obtained by contacting an ASPE board member. **The kits are free for members** and will be available at the December, January and February technical meetings. Official car kits may also be purchased from your local scout store.
2. If you have a child, grandchild, nephew, etc. involved in Cub Scouting, please feel free to use their car for the NASPE race, provided it meets the Specification for Construction requirements. Car must still be registered and weighed-in on the night of the event to be eligible for prizes.
3. Participants may enter more than one (1) car for the event, but only the first car kit is free. Addition kits can be purchased at a cost of \$6.00 each.



CAR SPECIFICATIONS FOR CONSTRUCTION: (Also see sheet included with your official car kit).

1. WEIGHT: 5 ounces **maximum** (but can be lighter). Min. weight of 4 ounces is suggested.
2. LENGTH: 7 inches **maximum** (but can be shorter).
3. WIDTH: 2 3/4 inches **maximum**, and 1 3/4 inches **minimum** between the front wheels and the same between the rear wheels. Otherwise, your car will not fit over the track guide rail.
4. CLEARANCE: 3/8 inches **minimum** from bottom of car to track (rail) top. Otherwise, your car will not clear the track guide rail.
5. WHEELS: You must use the wheels supplied with your official car kit (or similar BSA official racing wheels available at your local scouting shop).
6. Axles do not necessarily have to be placed in the pre-drilled slots, but the axle (nails) supplied in your car kit **MUST** be utilized.
7. **NO**, bearings, moving or loose parts are allowed **ANYWHERE** on or in the car.
8. The car shall not ride on any kind or type of spring.
9. Graphite (or dry lubricant) may be added to the wheels until the car is registered and weighed-in, but not after. **No Liquid or oil base lubricants will be allowed** as they can ruin the racing surface.
10. Magnets are not allowed anywhere on the car as they may interfere with the timing system.

REGISTRATION AND WEIGH-IN PERMITS:

1. All cars must be registered and weighed-in to be eligible to participate in the event.
2. Your official car number will be provided during registration and weigh-in period.
3. Cars will be impounded (retained) by the race staff until completion of the event at which time they will be returned to the participants.
4. If a car is not in compliance with the codes and standards outlined above it will be disqualified and will not be eligible to receive trophies and awards. However, at the discretion of the race official the car may still be allowed to race.
5. If you are unable to be present for the registration and weigh-in period, but still wish to participate, please contact the EMC-ASPE Board or the race official to make arrangements register and weigh-in car prior to March 12th, 2024.

“Good Luck and Have FUN Racing”





EASTERN MICHIGAN

2ND ANNUAL GOLF OUTING



TUESDAY, JUNE 11, 2024



**THE LINKS OF NOVI
NOVI, MICHIGAN**

ASPE Mentoring Program

The Women of ASPE are excited to introduce ASPE's new Mentoring Program!

This program, which is available to all members of the Society, has been designed to connect ASPE members who have a particular skill set (mentor) with individuals (mentee) who are searching to acquire the same skills to develop and make progress toward their personal and professional goals.

Who Is a Mentor?

A mentor is someone who can help the mentee develop skills for success and long-range career planning, is able to be a good listener, is willing to share experiences and views, is willing to commit time and effort, provides an "open door" to questions and problems, points out both strengths and opportunities for improvement, and has a vested interest in the growth and development of their mentee.

Benefits to the mentor:

- Satisfaction in helping someone mature, progress, and achieve goals
- Meeting and sharing experiences with other mentors
- Personal ongoing support to help the mentee succeed
- Personal fulfillment through contribution to the Society and the individual

Who Is a Mentee?

Having a mentor can contribute to a successful and satisfying career. Without a mentor, that learning occurs mostly through trial and error. With a mentor, even experienced professionals can benefit from the experiences and expertise of someone who has withstood the trial and can help the mentee avoid the mistakes. Similarly, those new to the industry will discover that being a mentee shortens the learning curve for acquiring the skills and knowledge most critical to a fruitful career.

Benefits to the mentee:

- Discover new talents about yourself
- Career satisfaction
- Expand your personal network
- Maximize your strengths

For more information click below:

<https://connect.aspe.org/aspe-mentor-match/mentoring>





Women of ASPE®

Learn more about our group!

WOA is dedicated to **engaging, retaining,** and **advancing** women in the plumbing design industry through:

- > Mentoring programs
- > Membership outreach
- > Partnerships with industry-related associations
- > Educational and leadership offerings

And more!



Email rrodriguez@aspe.org and visit aspe.org





New Century Sales, Inc.
Manufacturer's Representatives

EAST MICHIGAN
1715 Traditional Dr.
Commerce Township, MI 48390
P (248) 960-1147 F (248) 960-1149

WEST MICHIGAN
550 36th St. SE
Grand Rapids, MI 49548
P (616) 600-9660

 https://www.americanstandard-us.com/professionals/architect-designer (Kitchen & Bathroom)	 www.amtrol.com (Expansion Tanks)	 www.bascoshowerdoor.com (Shower Doors)	 www.bradleycorp.com (Washroom Solutions)
 www.caleffi.com/usa/en-us (Hydronic Accessories)	 www.fiatproducts.com (Shower Floors)	 https://www.grohe.us/customize/architects-and-designers (Faucets)	 www.ibcboiler.com (Boilers)
 www.oasisbath.com (Fiberglass & Acrylic Tub & Showers)	 www.oasiscoolers.com (Oasis Water Coolers)	 Supply Chain Services www.oatey.com (Cherne, Dbn Brass, Harvey & Hercules)	 https://na.panasonic.com/us/home-living-solutions/ventilation-indoor-air-quality/ (Bath Fans)

www.raypak.com
 (Residential and Commercial Hydronic Products)

 Unlimited Polymer Solutions
www.rehau.com/us-en
 (PEX Plumbing Products)

www.rheem.com
www.ruud.com
 (Water Heaters)


Represented by New Century Sales:

WEST MICHIGAN
Michael Zago
C (616) 293-2121
E mikez@newcenturysales.com

EAST MICHIGAN
Todd Hiler
C (513) 633-2609
E toddh@newcenturysales.com

EAST MICHIGAN
Ross Beck
C (734) 673-2119
E rossb@newcenturysales.com

www.newcenturysales.com

The New Standard in Tank Lining Protection



Only Bradford White comes standard with Vitraglas® tank lining featuring Microban®.

- **Vitraglas®** provides unsurpassed protection from the corrosive effects of water.
- **Microban®** antimicrobial product protection helps prevent the growth of bacteria, mold and mildew on the surface of the tank lining.



Represented By:



Microban® antimicrobial product protection helps prevent the growth of bacteria, mold and mildew that may affect the product. The built-in antimicrobials do not protect users or others from disease-causing organisms. Microban® is a registered trademark of Microban Products Company. ©2023, Bradford White Corporation. All rights reserved. BWFA0423

Replacing Your Water Heater Every Few Years is Not Our Business Plan



Conquest[®] condensing, gas-fired water heaters are constructed from AquaPLEX[®] duplex stainless steel so they're corrosion-resistant in potable water at any temperature. Available in 199-1000 MBH, Conquest provides even more BTUs in small spaces and fits through a standard 36-inch doorway. With a thermal efficiency of up to 96%, long product life and a 15-year tank and heat exchanger warranty, you can't afford not to have one.

Call R.L. Deppmann or visit our Monday Morning Minutes blog at deppmann.com for information on PVI Water Heaters
800.589.6120



800.784.8326 | pvi.com

JANUARY JOINT ASPE/ASHRAE MEETING

**THANK YOU TO OUR
MEETING SPONSORS!**

THANK YOU TO OUR ATTENDEES!

Greg Baranski
Chip Bidigare
Nick Blauvelt
Esteban Cabello
Theresa Card
Oscar Cobb Jr.
Alexander Costakis
Derek Crowe
Kurt Cunningham
Jeffrey Czarniecki
MohdEslam Dahdolan
David Demirkan
Rhean Demirkan

Aaron Frantz
Lawrence Gabriel
Daria Garipova
Joseph Giglio
Pam Hartsell
Brian Hedman
Nick Hill
Benjamin Hooper
Haruka Iwasaki
Jake Jankosua
Ryan Jankowski
Andrew Johnson
Mike Kennedy

Hank Koppelo
Aaron Lindley
Phil Lucas
Anwar Maroki
Jeremy Martin
Brian Noonan
Christopher Obryant
Shawn Olger
Edward Pfannes
Kevin Rammo
Jalil Salim
Heidi Van Der Hoeven
Cory Weiss

JANUARY MEETING PHOTOS



A view from the podium



ASHRAE Detroit President Ryan Jankowski gave updates for their Chapter

JANUARY MEETING PHOTOS

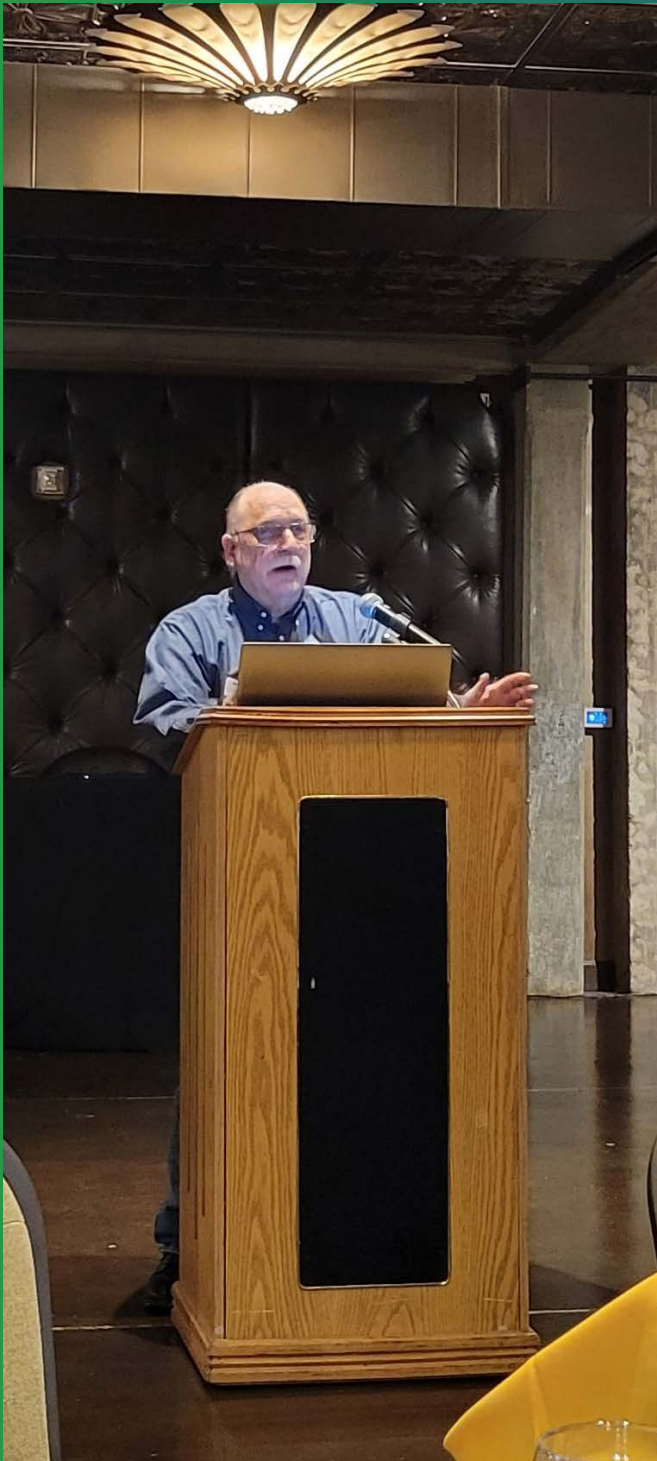


ASHRAE Detroit's Aaron Franz gave updates on opportunities for Young Professionals



ASPE EMC VP Tech Pam Hartsell shared upcoming events for our chapter

JANUARY MEETING PHOTOS



Boiler Division Chief Dave Stenrose gave an informative update on changes to the MI Boiler Code



EMC President Bill Grayzar presented a design class on Natural Gas systems

JANUARY MEETING PHOTOS



The Beaubien Room was beautiful!



It was great to see some friendly faces!

JANUARY MEETING PHOTOS



Lot's of smiles!



JANUARY MEETING PHOTOS



It was great to see some friendly faces!

FUTURE CITY MI 2024

2024 SPECIAL AWARDS

- | | |
|--|--|
| Best Communication System Award
Society of Women Engineers, Detroit Professional Section | Energy Problem Solvers
TC Energy |
| Best Engineered Project Award
NTH Consultants, Ltd. | Engineering Excellence Award
The Engineering Society of Detroit |
| Best Essay
The Engineering Society of Detroit | Herbert W. Link Visionary Award
Link Engineering Company |
| Best Integrated Design Award
Siddock Group, Inc. | Incorporation of Plastic Materials Award
Society of Plastics Engineers Detroit Section |
| Best Land Surveying Practices Award
National Council of Examiners for Engineering and Surveying | Innovative Sustainability Award
University of Detroit Mercy |
| Best Use of Alternative or Renewable Fuels Award
Dürr Systems, Inc. | Integration and Sustainable Design in Building Systems Award
Lawrence Technological University |
| Best Use of Energy Award
DTE Energy Foundation | Most Innovative Design for Water Conservation and Reuse Award
American Society of Plumbing Engineers, Eastern Michigan Chapter |
| Best Use of Green Principles Award
USGBC Detroit Region, Green Schools Committee | Most Team Spirit Award
The Engineering Society of Detroit |
| Best Use of Materials Award
ASM International, Detroit Chapter | Outstanding Future City Project Plan Award
Project Management Institute Educational Foundation |
| Best Visualization of a Smart, Sustainable City
American Society of Civil Engineers | People's Choice Award
The Engineering Society of Detroit |
| Best Waste Management and Recycling Award
East Michigan Chapter of the Air & Waste Management Association and Waste Management, Inc. | Rookie Team of the Year Award
The Engineering Society of Detroit |
| Building with the American Spirit: People, Projects & Communities Award
Barton Malow Company | Safest City Award
Hartland Insurance Group, Inc. |

21 Special Awards were given out this year!



All of the awards on display!

FUTURE CITY 2024



ASPE-DETROIT MERIT



Congratulations to Detroit Merit Charter Academy - Team Mustang City for winning our Special Award this year!

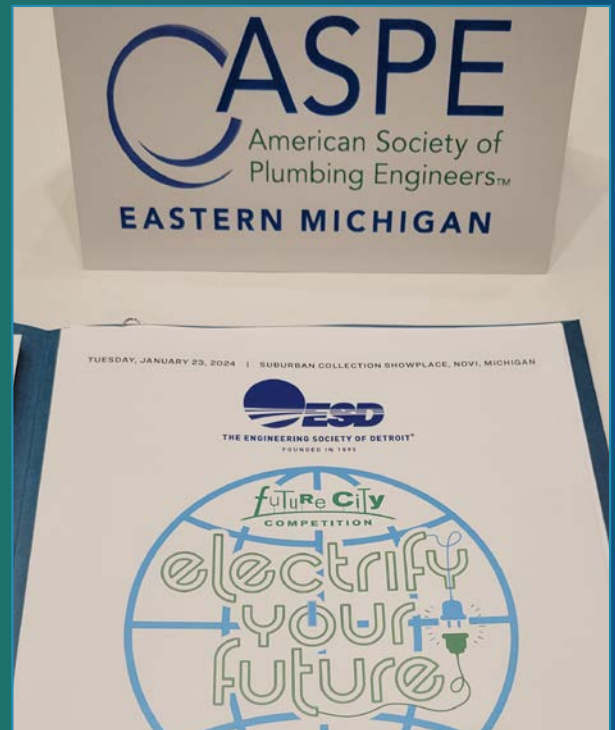
FUTURE CITY 2024



Winter weather didn't keep the die hard fans from attending!.



Thank you to all of this years sponsors!



This years theme - Electrify Your Future

FUTURE CITY 2024



EMC Board Members served as the Special Award Judging Team. (Front Row L to R) Rachel Gendich, Pam Hartsell, (Back Row L to R) Bill Grayzar and Chip Bidigare

FUTURE CITY 2024



The ASPE EMC Special Award for Most Innovative Design for Water Conservation and Reuse

TOPGOLF AUBURN HILLS: QuantumFlo Booster, Beeco RPZ, & Beeco Automatic Control Valve



GM Flint Assembly Plant: Hubbell Model EMV120-85-1.5SLA-A-XX Electric Tepid Water Heater



Velocity Boiler, Previously Crown Boiler

CRANE PUMPS & SYSTEMS

CRANE PUMPS & SYSTEMS



BOILERS & COMBINATION UNITS

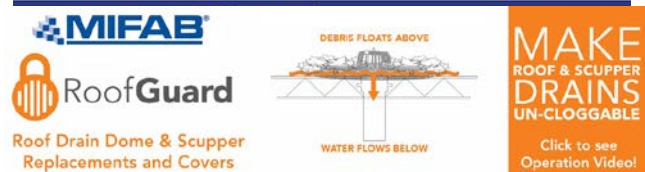
RIELLO

Energy For Life



QUALITY WATER & AIR: (248)589-8010

MIFAB PRODUCT LINE





EDUCATION



PUBLIC VENUES



HEALTHCARE



COMMERCIAL OFFICES

T&S IS HERE >

T&S is proud to be a trusted name across a wide range of markets — staying at the forefront of today’s evolving industry and providing a vast selection of reliable solutions that meet required codes and compliances.

Learn more at tsbrass.com/markets.

Find us in



T&S plumbing products represented in Eastern Michigan by: Diversified Spec Sales - 248-398-2400

EDUCATION AND CREDENTIALING

CPD-Certified in Plumbing Design

CPDT-Certified Plumbing Design Technician

GPD-Green Plumbing Design

ASPE Pipeline

News for the Plumbing System Design Industry



The only news site dedicated exclusively to ASPE, our members, and the plumbing engineering industry

MegaPress® G
Press safer.
Press bigger.



Connected in quality.

Quick, safe connections on large diameter gas lines.

Viega MegaPress(R)G requires no open flames or added cost of fire watch, so projects are safer and more profitable. Installers can secure gas pipe up to 4" in 16 seconds or less, saving 60-90% on labor costs. That's why professionals choose MegaPressG - the trusted press connection method approved for gas lines ½" to 4".

Michael Norgan
 District Sales Manager
 (989) 415-2431
 michael.norgan@viega.us

ALL-IN-ONE SCALD PROTECTION



420-T Series

Now there's no need to install a thermostatic mixing valve below the sink. The new 420-T Series combines Chicago Faucets durability with integrated scald protection. The result is a solid, easy-to-install restroom faucet that complies with ASSE 1070 requirements. With the 420-T, everything you need to meet current building codes and protect users against scalding is built right into the faucet.

Visit chicagofaucets.com or call your local representative for more information.

Taggart-Knight Group
 248/553-4388
 info@taggartknight.com



VE Sales merges with Sales Service Plus

Cindy Zatto
 czatto@saleserviceplus.com
 810-343-2713



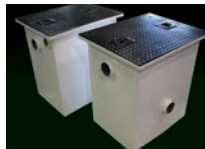
Highland Tank®

- Aboveground & Underground Oil/Water Separators
- Oil Sand Interceptors
- Elevator Sump Pump Interceptors
- Manual Oil Interceptors
- Advanced Filtration Systems

Sales Service Plus has merged with VE Sales. We look forward to working with you!



Elevator Sump Pump Interceptors



Manual Oil Interceptors



Oil/Water Separators



Elevator Oil Interceptors

www.highlandtank.com | 814-893-5701

Pipe Hangers & Devices
 Catalog No. 493

PHD

"The Complete Line of Pipe Supports and Devices"

PHD Manufacturing, Inc.
 44151 177th Street, Parma, Ohio 44130
 Phone: (800) 343-2713 • (330) 884-9900
 Fax: (330) 882-2763 • www.phdmg.com

Strut Products & Accessories
 Catalog No. 794

PHD

"The Complete Line of Strut Products & Accessories"

PHD Manufacturing, Inc.
 44151 Columbus Waterford Road
 Columbus, Ohio 43084
 Phone: (800) 343-2713 • (330) 882-9354
 Fax: (330) 882-2763 • www.phdmg.com

Snappitz - Self locking Insulated Pipe Supports



NEW

SNAPP ITZ

15 Seconds to Install

LEEDS Friendly – with higher insulative equalities and 17% recycled materials used in Polyisocyanurate Foam



Snappitz Thermal Insulated Pipe Shields are currently being installed throughout this Ford Blue Oval project.

We make rooftop supports easy.



Since 1982 | Easy to Work With
 20 year warranty | Made in USA
 Learn more at miroind.com



QLS SERIES

PREFABRICATED LIFT STATIONS WITH Z-RAIL® TECHNOLOGY

Choose your package system

- Single or multiple pump configurations
- Effluent, sewage, grinder, or progressive cavity pumps

Zoeller's Z-Rail® System and guide rails provides quick and easy pump removal

All Zoeller products are 100% **FACTORY TESTED.**





KERR PUMP AND SUPPLY

12880 Cloverdale, Oak Park, MI 48237

248-826-9414 tpaichak@kerrpump.com www.kerrpump.com

Liquid Pumps
Vacuum Pumps
Heat Exchangers
Blowers
Related Equipment
and Accessories

Sales • Service • Repair



PENTAIR FIRE PUMPS AURORA®

Compact Fire Pump Systems

- UL Listed/FM Approved NFPA-20
- UL Listed/FM Approved Controller NFPA-20
- Capacities of 50-750 Gpm.
- Pressures of 40-160 Psi.

Vertical Split Case Electric Drive Fire Pump

- Electric Driven
- For Commercial, Industrial and Marine use only.
- UL Listed/ FM Approved/NFPA-20 Design

Horizontal Split Case Diesel/Electric Drive Fire Pump

- Diesel and Electric driven available.
- Flows at 250 gpm to 5000 gpm.
- Pressures available up to 490 Psi.

Ask us about our Red-Hot Quick Shipping Program!

We test fire pumps
for annual and
acceptance
requirements.



www.aurorapump.com

Michigan's Oldest Supplier of Pumps and Process Equipment - 1905



Pattons medical

Medical Air Systems*

- Oil-Less Scroll
- Oil-Less Reciprocating
- Oil-Free Rotary Screw
- Oil-Flooded Reciprocating Control & Instrument Air Systems



Medical Vacuum Systems*

- Contactless Claw
- Lubricated Rotary Vane
- Dry Rotary Vane



Medical Pipeline Products*

- Manifolds
- Alarms
- Zone Valve Boxes
- Outlets
- Lab Pipeline Equipment
- Accessories



* Meets or exceeds NFPA 99-2021 Edition Health Care Facilities Code

www.pattonsmedical.com

PERFORMANCE
engineering group



32995 Industrial Road, Livonia, MI 48150

Phone 734.266.5300 Fax 734.266.5310

www.performanceengineering.com

BRANDS WE REPRESENT



BRANDS WE DISTRIBUTE



Centrotherm



Intellihot



SINCE 1906
wessels
company

Natural Gas / Propane / Electric
85,000 to 10,000,000 BTU's
- ALSO -
Holby Thermostatic Mixing Valves



ETV *Platinum Plus*

ELECTRONIC TEMPERING VALVE



Designed for Critical Temperature DHW Application

- Maintains Set Point within +/- 2°F

Safeguard Against High Temperature Conditions

- Optional High Temp Limit Valve
- Alarm Output

Maintenance Free

- Stainless Steel Valve Body reduces Scale Buildup
- External Actuator Eliminates Gasket Maintenance



ETS AND ETS-LT

ELECTRONIC TEMPERING STATION

Pre-wired and Pre-Piped Assembly

- Contains ETV Platinum Plus
- Includes all Fittings, Isolation Valves

Wall Mounted and Floor Mounted

- Minimal Footprint
- Sizes from 3/4" to 4"

Conforms to the following:

ASSE 1017

California Lead Free Plumbing Law

CSA B 125.3 (NSF/ANSI 61 Section 8)



Major Lozuaway and Associates

Mike Ostrowski

1117 W. Grand Blanc Road

Grand Blanc, MI 48439

Phone: 810-287-6983

Email: moski@lozuaway.com

20 New Dutch Lane, Fairfield, NJ 07004

Phone: 973-575-4004

Fax: 973-575-4052

heat-timer.com

Code Study and Development Group of Southeastern Michigan

Item No.	Description	Price Each*	Order Date			
3200S18MI	2018 MI Plumbing Code	\$ 89.50				
3300S18MI	2018 MI Mechanical Code (Not Yet Available)	\$ 89.50	PO Number			
3200S18	2018 IPC without Commentary	\$ 86.00	(If required)			
3210S18	2018 IPC with Commentary	\$ 112.00				
3300S18	2018 IMC without Commentary	\$ 86.00				
3310S18	2018 IMC with Commentary	\$ 112.00				
3600S18	2018 IFGC without Commentary	\$ 86.00				
3610S18	2018 IFGC with Commentary	\$ 112.00				
3000S18	2018 International Building Code	\$ 130.00				
3000S15MI	2015 MI Building Code	\$ 139.00				
3100S15MI	2015 MI Residential Code	\$ 126.00				
3550S15MI	2015 MI Rehab for Existing Bldgs	\$ 90.00				
3800S15MI	2015 MI Energy Code	\$ 48.00				
3600S15	2015 IFGC without Commentary	\$ 84.00				
3310S15	2015 IMC with Commentary	\$ 109.00				
		\$ -				

- **Payment MUST accompany order / verify your preferred delivery method**
- **Credit cards, cash or company check accepted.**
- Dann Holmes - buildingwaterhealth@outlook.com or (248) 921-0582
- If orders are to be mailed, call Dann and you will be advised of additional freight charges.
- **Make check payable to: Code Study & Development Group of SE Michigan**

Mailing Address: **Will be given upon placement of order**

Item No.	Description	Quantity	Unit Price	Item Total	Status
				\$ -	
				\$ -	
				\$ -	
				\$ -	
				\$ -	
				\$ -	
				\$ -	
				\$ -	
				\$ -	
				\$ -	

Total books subject to incoming ICC Frgt charges **0**

	Client Information		Order Details
Company	<input type="text"/>	Add \$5 per book (Outgoing Frgt Charge)	Sub-Total \$ -
Address	<input type="text"/>		ICC Frgt \$ -
City	<input type="text"/>		USPS Frgt \$ -
State	<input type="text"/>		MI Sales Tax \$ -
Zip-Code	<input type="text"/>		Invoice Total \$ -
	Contact Information		
Attention	<input type="text"/>	Received By: _____	
E-Mail	<input type="text"/>		
Phone	<input type="text"/>		

Check No. _____ or Cash _____ Date Paid _____
 Credit Card Approval No. _____

*Supersedes all pricing forms printed before October 19, 2021

2021 Code Study Order Form

BALFREY & JOHNSTON, INC.

Manufacturers' Representatives
13050 Northend
Oak Park, MI 48237
Ph 313 864-2800 Fax 313 864-7219
George D. Johnston: george@balfrey-johnston.com
balfrey-johnston.com

J.W. SALES, INC.

Manufacturers' Representative
1570 E. Highwood
Pontiac, MI 48340
O: 248.745.8590 F: 248.745.0889
Thomas Huck: thomash@jwsalesinc.net
C: 248-602-1575
Michael Fedorinchik: mikef@jwsalesinc.net
JWsalesinc.net

BURKE AGENCY, INC.

Manufacturers' Representatives
2605 E. Oakley Park Road, Suite A,
Commerce Twp, MI 48390
Ph 248 669-2800 Fax 248 669-3310
Brian Burke, Peter Lapham, John Taylor
bburke@burkeagency.com
burkeagency.com

KERR PUMP AND SUPPLY

Manufacturers' Representatives
12880 Cloverdale
Oak Park, MI 48237
Ph 248 543-3880 Fax 248 543-3236
Tyler Palchak: tpalchak@kerrpump.com
Direct: 248-826-9414
kerrpump.com

DALE PRENTICE COMPANY

Manufacturers' Representatives &
Application Engineering Solutions Provider
26511 Harding Avenue
Oak Park, MI 48237
Ph 800 536-4700 Fax 248 339-5559
Michael Cullen: mcullen@prenticeco.com
Mobile 248 302-5924
prenticeco.com

LOCHINVAR

High Efficiency Water Heaters and Boilers
45900 Port Street
Plymouth, MI 48170
Ph 734 454-4480 Fax 734 454-1790
Jason Loverich: jloverich@lochinvar.com
lochinvar.com

DAVE WATSON ASSOCIATES, INC.

Manufacturers' Representatives
1325 W. Beecher St.
Adrian, MI 49221
Ph 517 263-8988 Fax 517 263-2328
Rick Johnston: rjohnston@davewatson.biz
davewatson.biz

MAJOR/LOZUAWAY & ASSOCIATES, INC.

Manufacturers' Representatives
1117 W. Grand Blanc Rd.
Grand Blanc, MI 48439
Ph 810 234-1635 Fax 810 234-8389
Mike Ostrowski: moski@lozuaway.com
Mobile 810 287-6983
Bill Campbell, PE: bill@lozuaway.com
Mobile 810-287-0029

**DIVERSIFIED SPEC. SALES, INC./
HOWLEY AGENCY SALES CO.**

Manufacturers' Representative
13261 Northend Ave.
Oak Park, MI 48237-3265
Brendan Burdette: bburdette@dsshowley.com
Ph 248 398-2400 Fax 248 547-4905
diversifiedspec.com

NEW CENTURY SALES, INC.

Manufacturers' Representatives
1715 Traditional Dr.
Commerce Township, MI 48390
Ph 248 960-1147
Ross Beck: rossb@newcenturysales.com
Mobile 734 673-2119
Todd Hiler: toddh@newcenturysales.com
Mobile 513 633-2609
newcenturysales.com

HS/BUY VAN ASSOCIATES, INC.

Manufacturers' Representatives
56 S. Squirrel
Auburn Hills, MI 48326
Jarrett Armstrong
Ph 888 472-8982 Fax 248 852-0298
info@hsbuyvan.com
hsbuyvan.com

PAULA. BAKER

ASSE Region #4 Director - Mid West
ASSE International
18927 Hickory Creek Drive, Suite 220
Mokena, IL 60448
Ph 313 399-3072 Fax 248 585-1437
Paul Baker: paul.baker@ualocal98jatc.org
www.asse-plumbing.org

PERFORMANCE ENGINEERING GROUP

Engineered Water Products
32955 Industrial Rd.
Livonia, MI 48150

Alan Deal: adeal@performanceengineering.com
Ph 734 266-5300 Fax 734 266-5310
performanceengineering.com

R.L. DEPPMANN COMPANY

Manufacturers' Representatives
46575 Magellan Drive
Novi, MI 48377

Gerry Potapa Jr., CPD, Paul Prentice, LEED AP®
Mark Fine, LEED AP®, Chris Lieder
Ph 800 589-6120 Fax 248 354-3763
sales@deppmann.com
deppmann.com

PROGRESSIVE PLUMBING SUPPLY

Wholesale Distributor
31239 Mound Road
Warren, MI 48092

Ph 586 756-8662 Fax 586 756-9077
ppsupplyco.com

Locations: Warren, Detroit, Mt. Clemens, and Oxford

TAGGART-KNIGHT GROUP

Manufacturers' Representatives
37686 Enterprise Ct.
Farmington Hills, MI 48331

Gary O. Taggart - gary@taggartknight.com
Scott Taggart - scott.taggart@taggartknight.com
Ph 248 553-4388 Fax 248 553-4653
info@taggartknight.com
taggartknight.com

QUALITY WATER & AIR, INC.

Manufacturers' Representative
1402 Souter
Troy, MI 48083

Georgann Kummer, WBE
Ph 248 589-8010 Fax 248 589-8016
qualitywaterair@cs.com
qualitywaterair.com

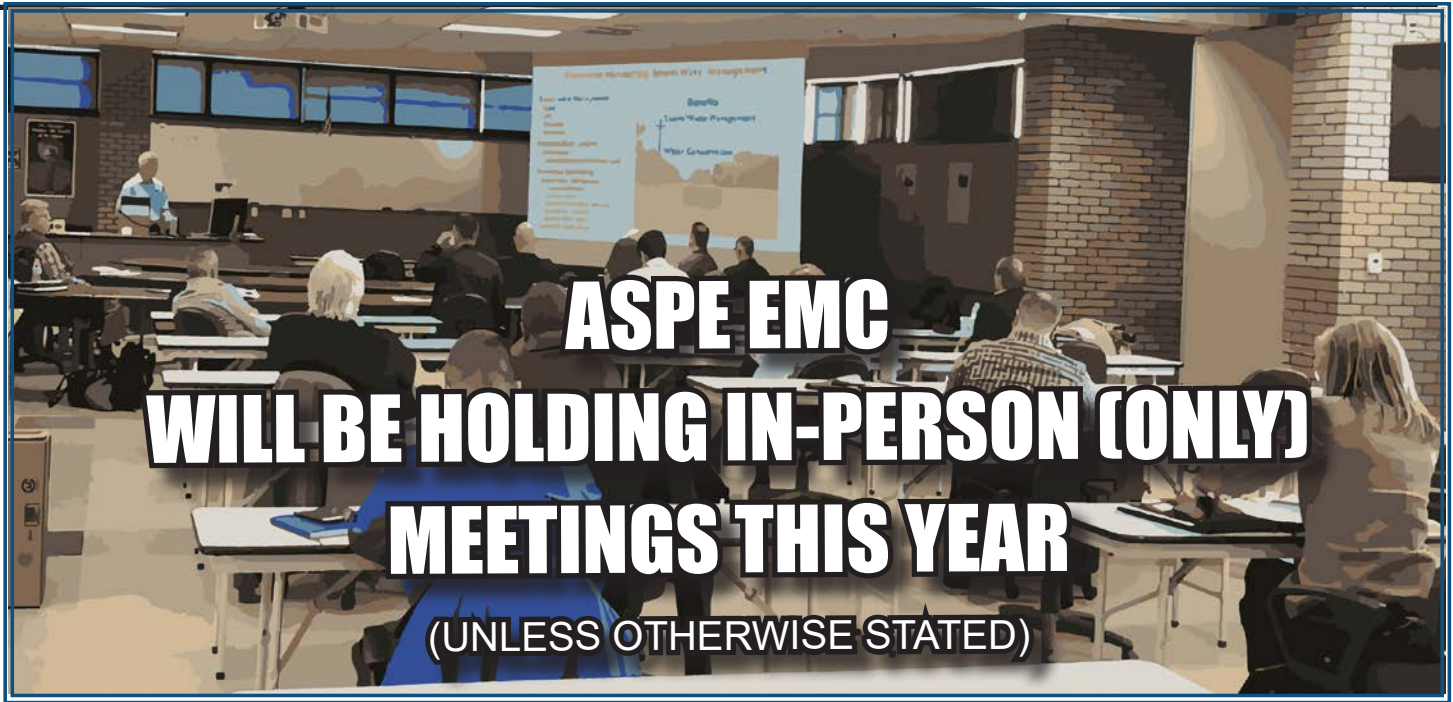
SERVICE SALES PLUS

"Service is our middle name"

45606 Mast Street
Plymouth, MI 48170
Ph 734-454-7620 Fax 734-454-7632
servicesalesplus.com



INCREASE
EXPAND
GROW
MULTIPLY



ASPE EMC WILL BE HOLDING IN-PERSON (ONLY) MEETINGS THIS YEAR (UNLESS OTHERWISE STATED)

2023-2024 ASPE EMC Board

President

William Grayzar, CPD
28150 Greenfield Rd.
Southfield, MI 48076
(248)569-1430 ext.333
bill@dsonline.com
president.aspe.emc@gmail.com

VP Technical

Pam Hartsell, CPD, PMP
Strategic Energy Solutions
4000 W. Eleven Mile Rd.
Berkley, MI 48072
(248) 399-1900 x 222
Fax: 399-1901
vpt.aspe.emc@gmail.com

VP Legislative

Ryan Lyle
Director of Training PITC
1911 Ring Drive
Troy, MI 48083-4229
248-585-1435 ext. 122
Ryan.Lyle@ualocal98jatic.org

VP Membership

Josh Pedraja, ASSE 6060
Toledo, OH | Central USA
4610 Entrance Drive, Suite H
Charlotte, NC 28273
616-307-5968
joshpedraja.aspe@gmail.com

Education Chair

Kristin Simoneaux, P.E., CPD
2338 Coolidge Hwy. #100
Berkley, MI 48072
(248) 336-4760
kristin.simoneaux@stantec.com

Treasurer

Rachel Gendich
Strategic Energy Solutions
4000 W. Eleven Mile Rd.
Berkley, MI 48072
(248) 399-1900
Fax: 399-1901
treasurer.aspe.emc@gmail.com

Administrative Secretary

George Johnston II
13050 Northend Ave
Oak Park, MI 48237
(313) 864-2800 Fax: 864-7219
george2@balfrey-johnston.com

Corresponding Secretary/ VP Social Media

Josh Pedraja, ASSE 6060
Toledo, OH | Central USA
4610 Entrance Drive, Suite H
Charlotte, NC 28273
616-307-5968
joshpedraja.aspe@gmail.com

Chaper Affiliate/Liaison

Chip Bidigare
23350 15 Mile Rd.
Clinton Township, MI 48035
586-755-3110 x 5938
chip.bidigare@merloenergy.com

AYP Liaison

Rachel Gendich
Strategic Energy Solutions
4000 W. Eleven Mile Rd.
Berkley, MI 48072
(248) 399-1900
Fax: 399-1901

WOA Liaison

Theresa Card, P.E., CPD,
LEED AP BD+C
Strategic Energy Solutions
4000 West 11 Mile Rd
Berkley, MI 48072
(248) 399-1900 ext 223
allethe@gmail.com

Directors

Michael Melaragni, CPD
38958 Lapham Drive | Livonia,
MI 48154-1014
(734) 591-9339
mjmelaragni@yahoo.com

Theresa Card, P.E., CPD,
LEED AP BD+C
Strategic Energy Solutions
4000 West 11 Mile Rd
Berkley, MI 48072
(248) 399-1900 ext 223

Brianne Hall, P.E., CPD,
LEED AP BD+C, GGP
FTC&H
39500 Mac Kenzie Dr. Suite 100
Novi, MI 48377
(248) 324-4780
bhall@fishbeck.com

Dann Holmes
(248) 921-0582
buildingwaterhealth@outlook.com



SPONSOR ADVERTISING OPPORTUNITY INFORMATION

ASPE EMC News is published 9 times per year - September through May.

Yearly advertising for a Business Card ad, which also includes a full Line Card in our sponsors guide:
\$200.00 for members and \$250.00 for non-members.

Graphic Ads - Full Year (9 Issues): Quarter page - \$250.00 ○ Half page - \$350.00 ○ Full page - \$550.00

Checks should be made payable to ASPE EMC and mailed to: Rachel Gendich – Treasurer
c/o Strategic Energy Solution, 4000 W. Eleven Mile Rd., Berkley, MI 48072

Email all digital artwork to: Theresa Green, Newsletter Editor at: theresa.m.green@outlook.com

Circulation 260 - Distributed to: Engineers, Contractors, Inspectors, and other industry professionals in Michigan.

PAY FAST, PAY EASY
Secure Payments Accepted By

